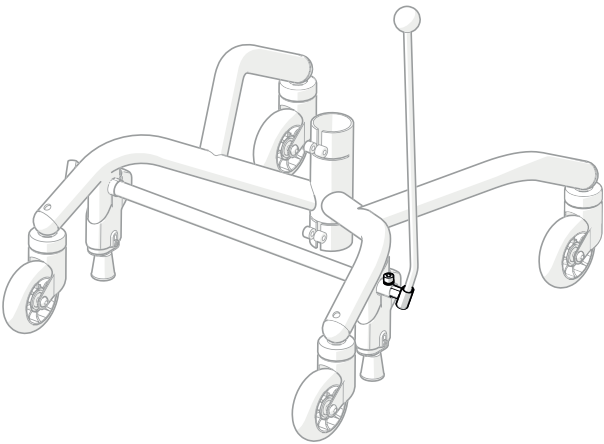
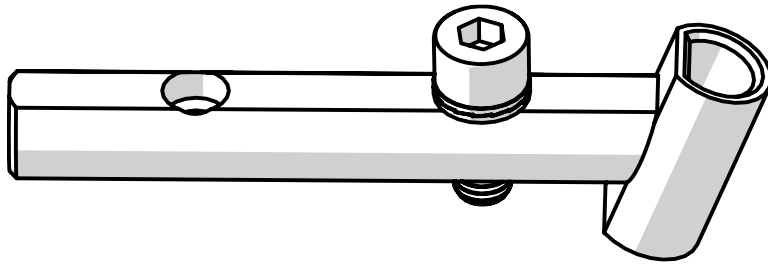




ENG

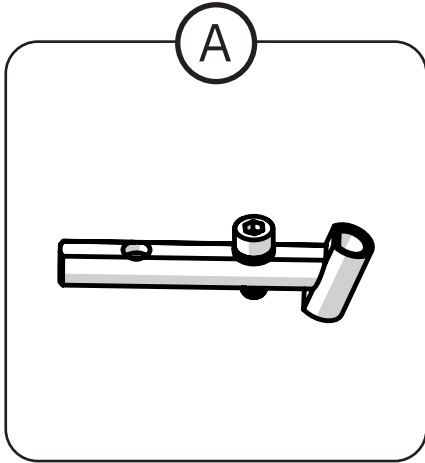
# BRAKE LEVER BRACKET REAL 9000 PLUS



# Table of contents

- 1. Item list ..... 3
- 2. Necessary tools ..... 3
- 3. Assembly instructions ..... 4
  - 3.1. Remove the previous brake lever bracket ..... 4
  - 3.2. Mounting the brake lever bracket ..... 4
- 4. Use and adaptation ..... 5
  - 4.1. Adjust the position of the brake lever using the brake lever bracket ..... 5
- 5. Destruction and recycling ..... 5

# 1. Item list



- Ⓐ 802799 Brake lever bracket for PLUS stand adjustable (2 positions)
- 802880 Brake lever bracket for PLUS stand adjustable (7 positions)

# 2. Necessary tools

- A 6 mm Allen key

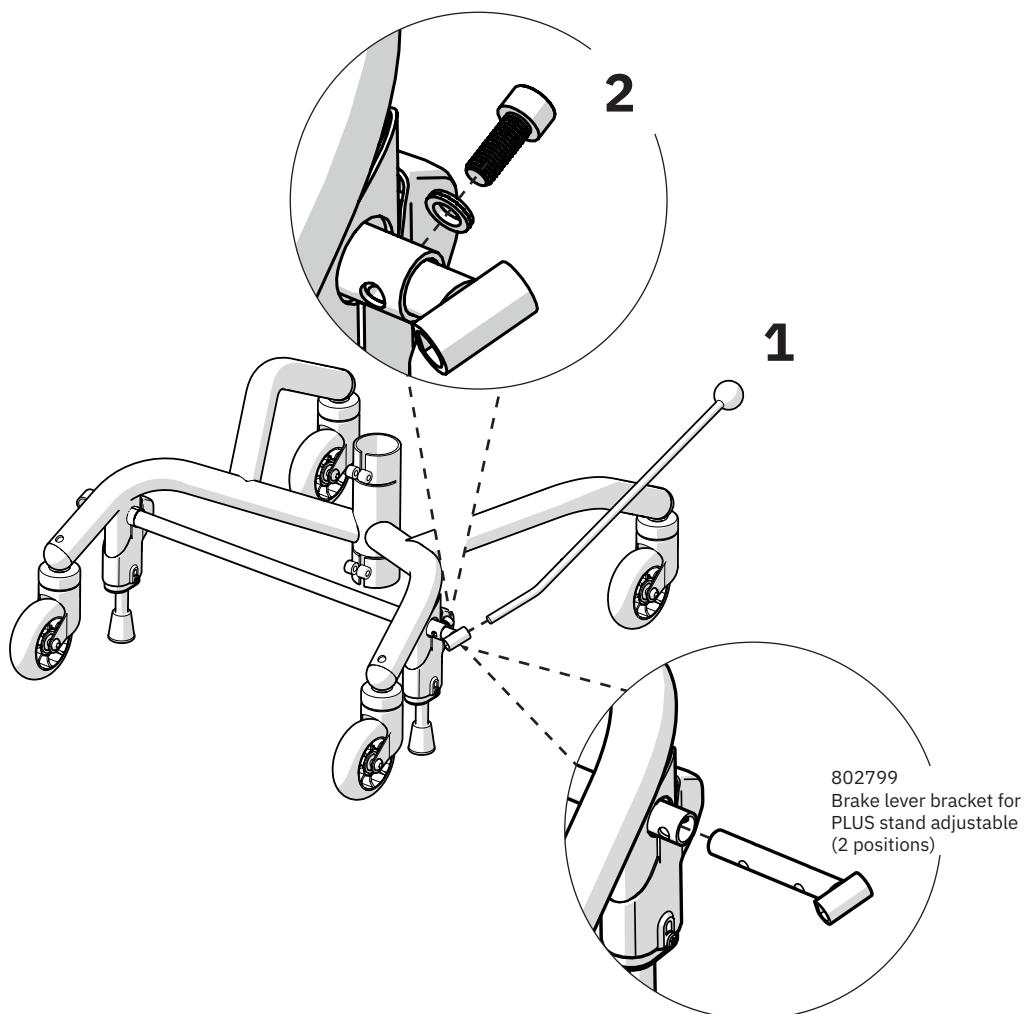
### 3. Assembly instructions

#### 3.1. Remove the previous brake lever bracket

Apply the chair brake and remove any potential brake lever (1) by pulling it out of its brake lever bracket. Then slacken using a 6 mm Allen key on the screw (2) that locks the brake lever bracket into the brake shaft. Finally, remove the brake lever bracket by pulling it out of the brake shaft.

#### 3.2. Mounting the brake lever bracket

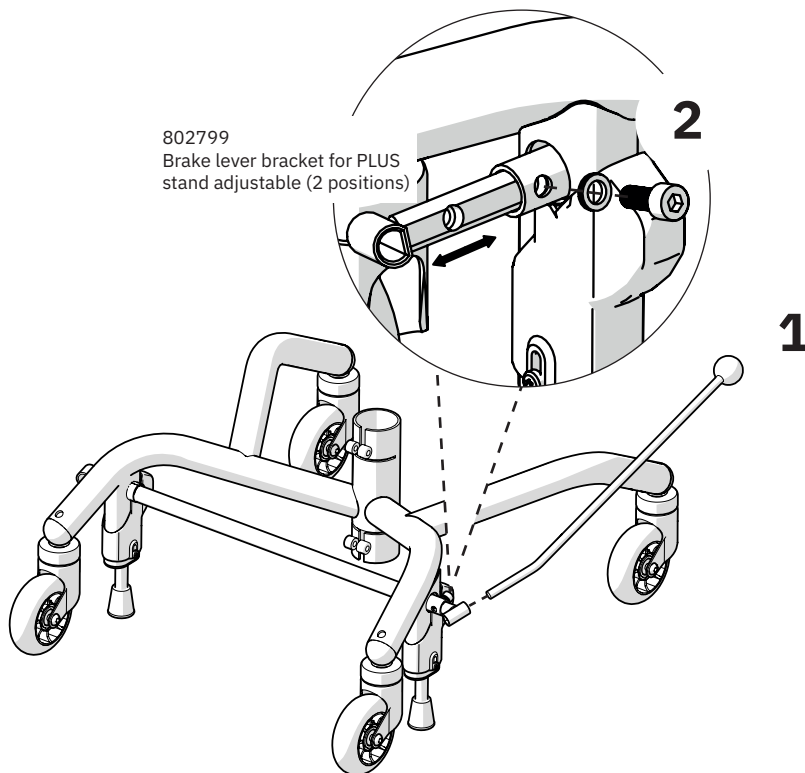
Mount the brake lever bracket in the brake shaft so that one of the screw holes of the brake lever bracket is centred in the radial holes of the brake lever shaft. Please note that the brake lever bracket has several depth adjustment options in the form of the two, or seven, screw holes in its shaft. Lock the brake lever bracket by tightening the screw (2) through the locking washer and the brake shaft. Finally, install brake lever (1), if any.



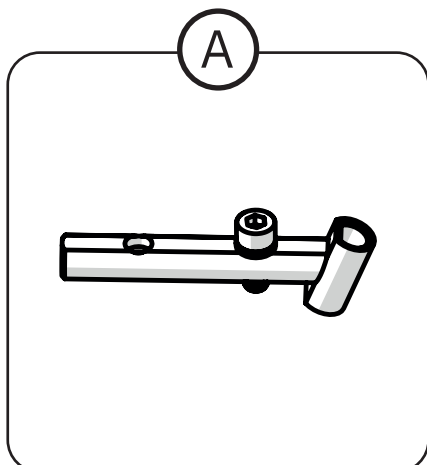
## 4. Use and adaptation

### 4.1. Adjust the position of the brake lever using the brake lever bracket

If necessary, the brake lever mount can be adjusted in depth to achieve better brake lever accessibility. Depending on the brake lever bracket used, there are two or seven depth positions to which the brake lever bracket can be locked. Apply the chair brake and remove the brake lever (1) by pulling it out of the brake lever bracket. Then slacken the screw (2) and slide or pull the brake lever bracket out of the brake shaft to adjust its in-depth position. Make sure that one of the screw holes of the brake lever bracket is centred in the radial holes of the brake shaft and tighten the screw (2). Then finish by remounting the brake lever (1) into the brake lever bracket.



## 5. Destruction and recycling



(A) Sort as metal

## Contact details

### Mercado Medic UK



Mercado Medic UK  
Repton House  
Ashby Road East

Burton Upon Trent, Derbyshire,  
DE15 0YZ, UK



Phone: +44 3330 033 666

Mon-Fri 08.00-16.30 (CET/CEST)



[www.mercado-medic.co.uk](http://www.mercado-medic.co.uk)

[contact@mercado-medic.co.uk](mailto:contact@mercado-medic.co.uk)



Mercado Medic AB  
Tryffelslingan 14  
SE-181 57 Lidingö  
SWEDEN

Phone: +46 8 555 143 00  
E-mail: [info@mercado.se](mailto:info@mercado.se)