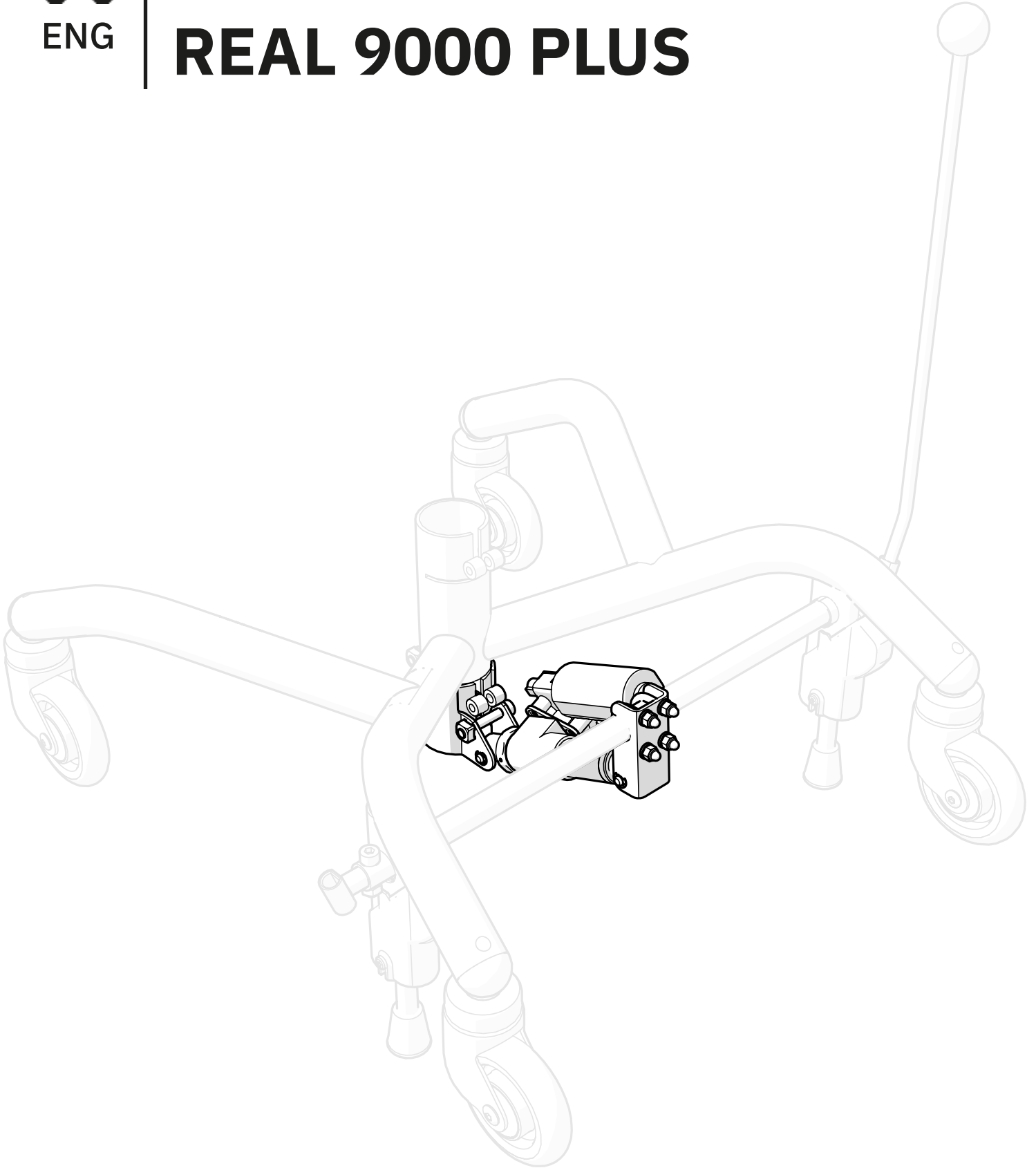




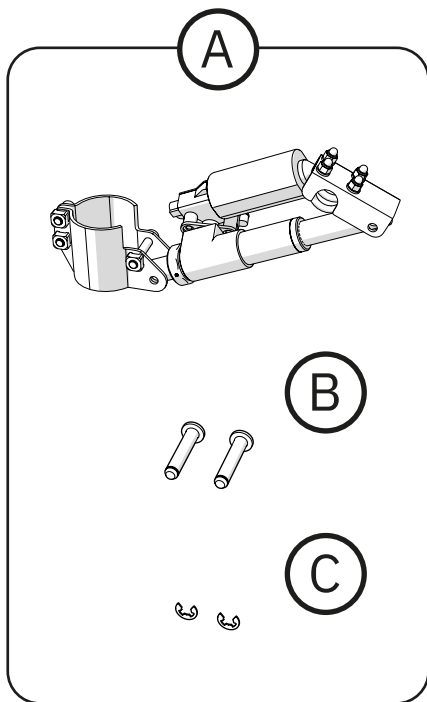
# ELECTRIC BRAKE REAL 9000 PLUS



# Table of contents

1. Item list .....	3
2. Necessary tools .....	3
3. Warnings .....	3
4. Assembly instructions .....	4
4.1. Pinch protection .....	4
4.2. Apply the base's brake .....	4
4.3. Mounting the brackets .....	5
4.4. Install the electrical actuator .....	6
4.5. Connect the electronics .....	6
4.6. Check and adjust if necessary .....	7
4.7. Adjust the electrical actuator .....	8
4.8. Positioning of the brake cam .....	9
5. Care instructions .....	10
6. Destruction and recycling .....	10

# 1. Item list



- Ⓐ 803037 El. actuator kit for el. brake for Plus base 20 Axle for relay card  
 803067 Relaycardkit brake + up/down compl. incl.el.kit elbr.Plus  
 803077 El. actuator kit for el. brake for manual 9000 chair PLUS incl battery  
 803273 El. actuator+Relay kit for brake for 9000 Plus excl charging box  
 803276 El. actuator+Relay kit for 9000 Plus for brake incl manoeuvre box Plus tongue  
 803899 El. actuator+Relay kit for 9000 Plus for brake incl manoeuvre box Plus flat  
 804482 El. actuator kit brake incl. manoeuvre box without tongue 24V 1G  
 804498 El. actuator kit brake 24V 1G  
 804521 El. actuator+Relay kit for 9000 Plus front brake button incl. manoeuvre box  
 804548 El. brake kit coupling for manual chair with manoeuvre chair without tongue 24V 1G  
 804621 El. actuator kit for brake incl.manoeuvre box with tongue 24V 1G  
 804627 El. brake kit coupling for manual chair with manoeuvre box with tongue 24V 1G
- Ⓑ 805266 Cylindrical bolt fzb f. e-clip
- Ⓒ 805267 E-clip RWS 6

# 2. Necessary tools

- A 6 mm Allen key
- A 10 mm block wrench
- Tools for dismantling e-clips - e.g. a small slotted screwdriver (Ø3 mm or less).
- Tools for mounting e-clips - e.g. pliers.

Supplement the installation instructions are with *Wiring Guide 24V1G* or a *Wiring Guide for REAL 9000 PLUS 12 V*, which can be found at [mercado.se/en](http://mercado.se/en).

# 3. Warnings



## Warning!

1. Please note that there is a risk of pinching between the base and brake cam if pinch protection is missing.
2. There is a risk of pinching between the actuator and brake shaft during installation.

## 4. Assembly instructions

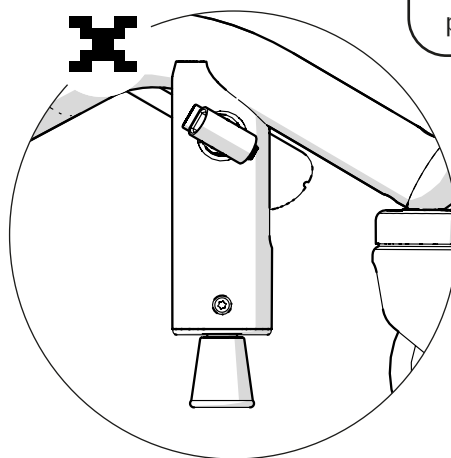
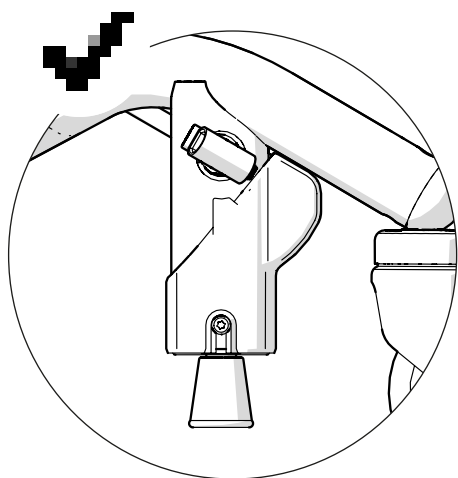
Most of the instructions shown will be for a base with a backward brake function, but the instructions also apply for bases with a forward brake function.

### 4.1. Pinch protection

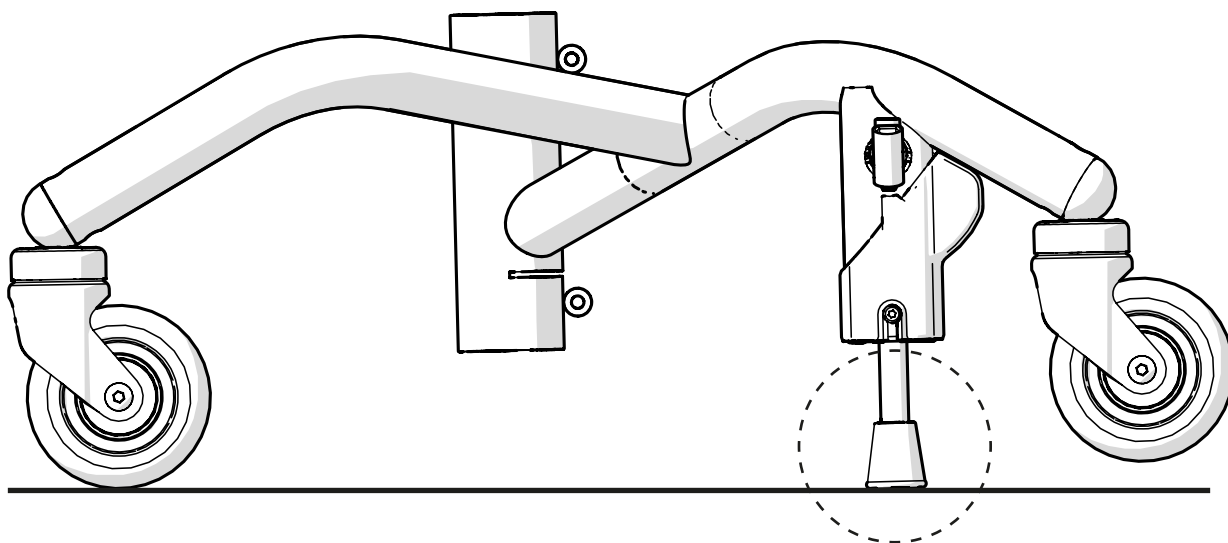
Check that pinch protection is fitted. If missing, it can be ordered in our webshop. Article number 805192.



Electric brake must not be used without pinch protection fitted!



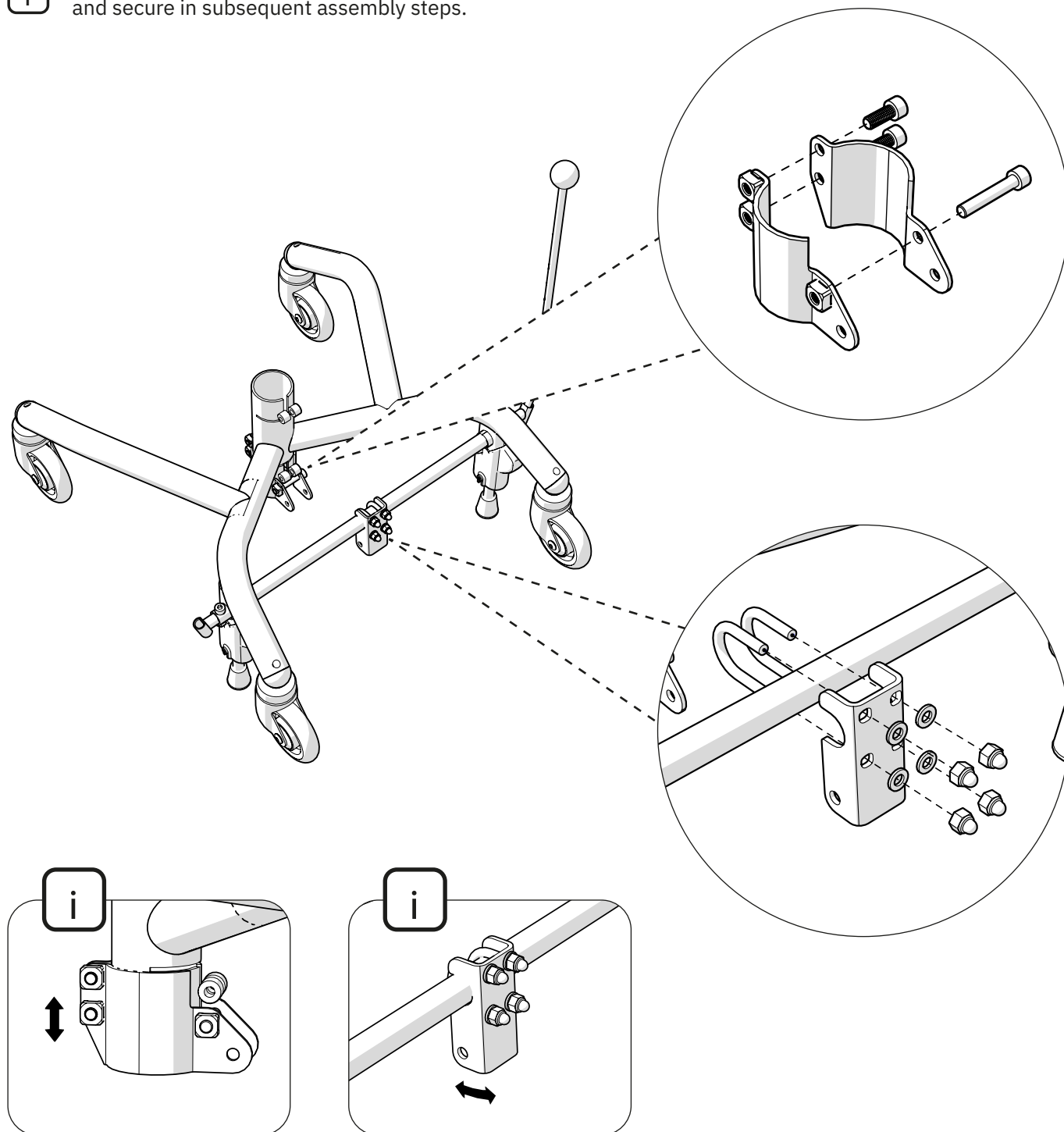
### 4.2. Apply the base's brake



### 4.3. Mounting the brackets

Fit the respective bracket to the centre tube and the brake shaft. Screw the screws in by hand without tightening.

**i** Both brackets should be adjustable. Tighten these and secure in subsequent assembly steps.

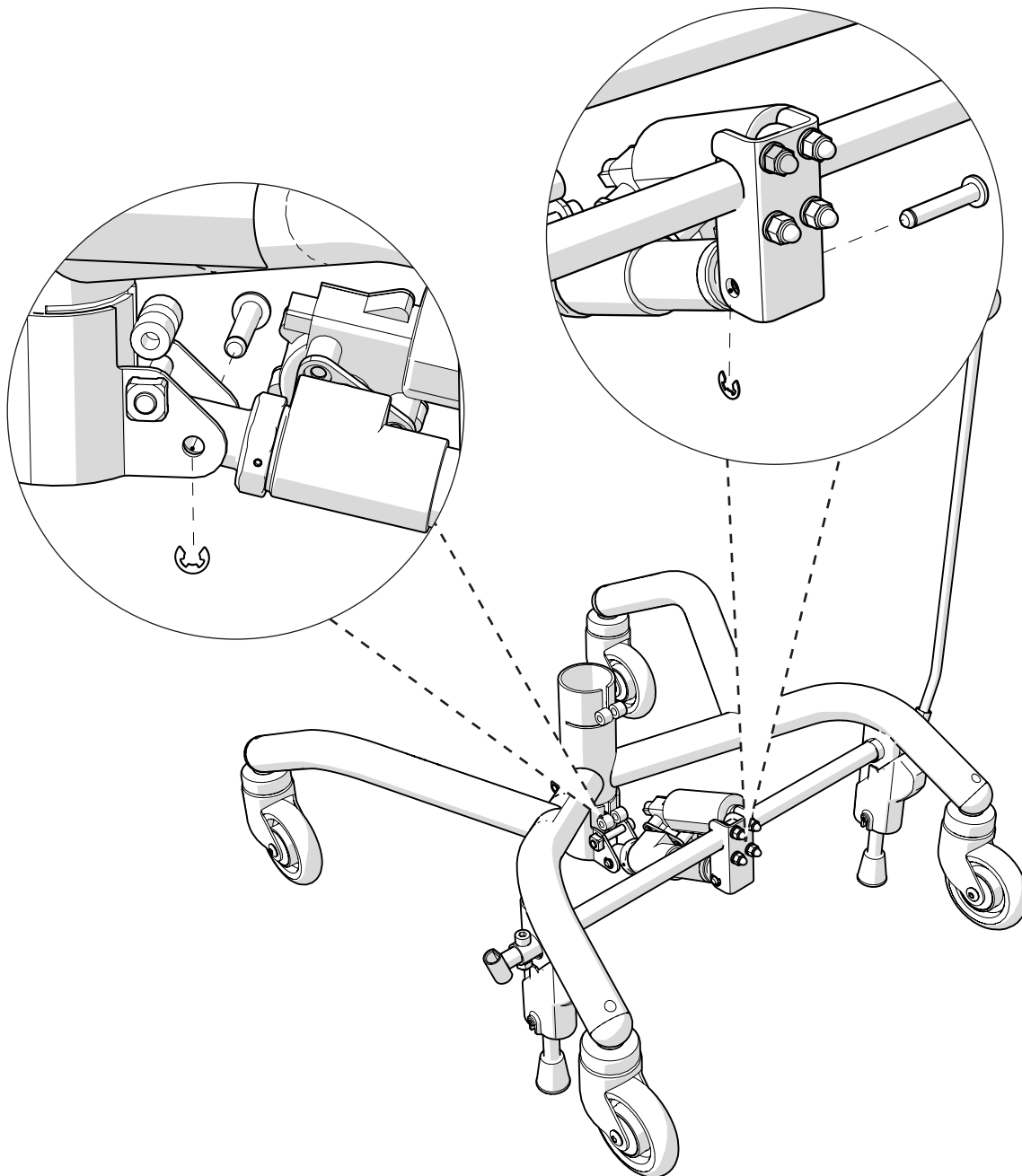


#### 4.4. Install the electrical actuator

Press the cylindrical bolts through so that the electrical actuator is secured. Lock the cylindrical bolts using the e-clips.

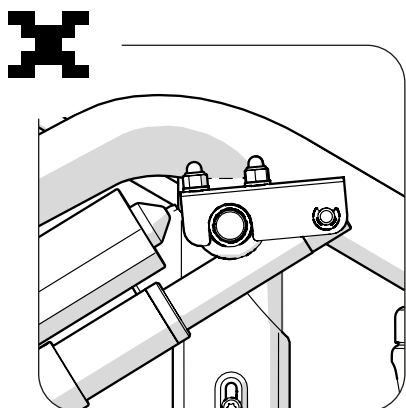
#### 4.5. Connect the electronics

For information on how to connect the electronics, see the *Wiring Guide 24V1G* or *REAL 9000 PLUS Electronics* document that can be found at [mercado.se/en](http://mercado.se/en).

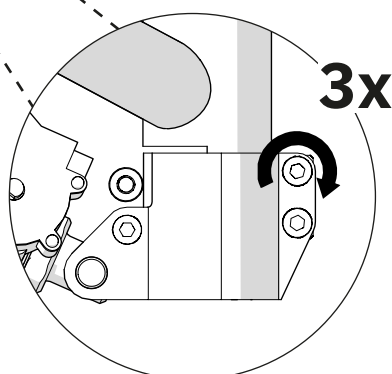
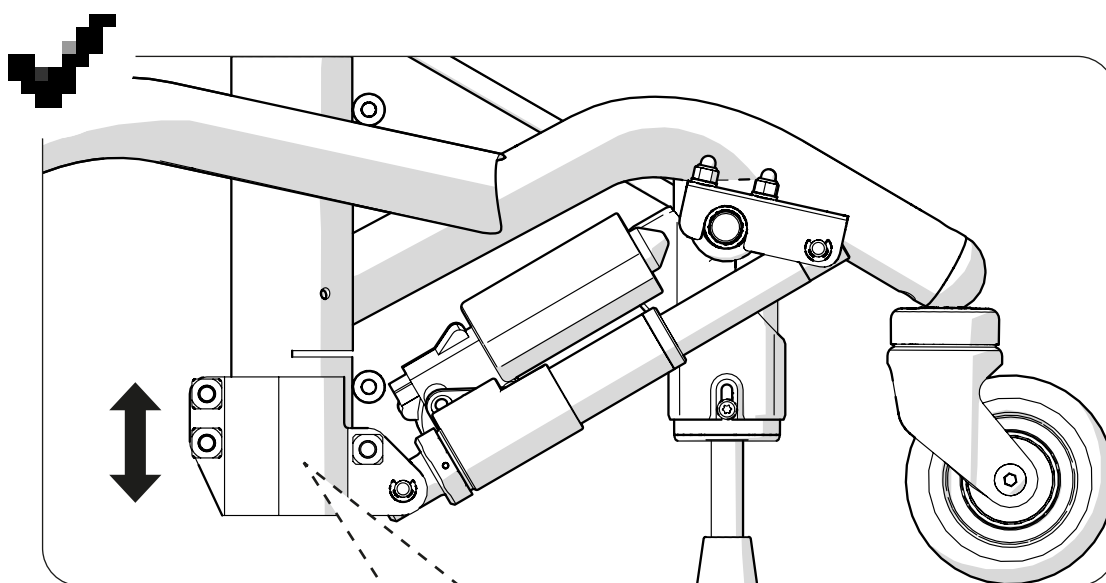


### 4.6. Check and adjust if necessary

Check that the actuator axle does not collide with the brake axle bracket or the brake axle. If there is a risk of collision, adjust the vertical position of the centre bracket. Tighten the screws once there is no risk of collision or pinching.



Please note that there is a risk of pinching between the actuator and brake shaft.

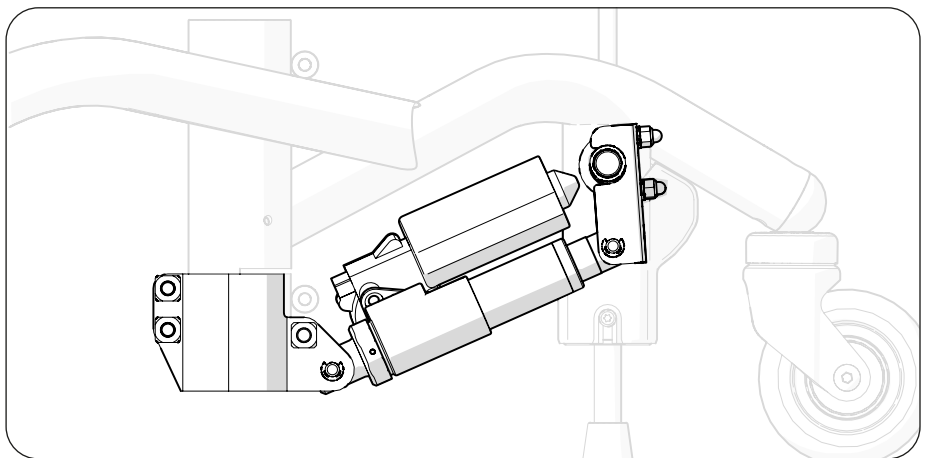
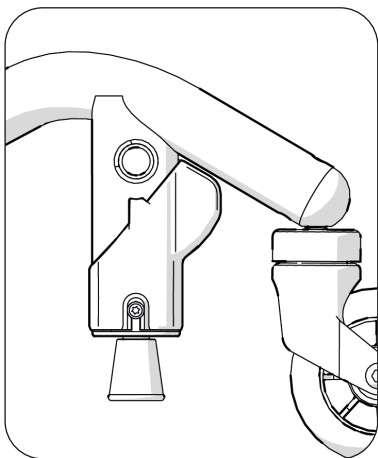


## 4.7. Adjust the electrical actuator

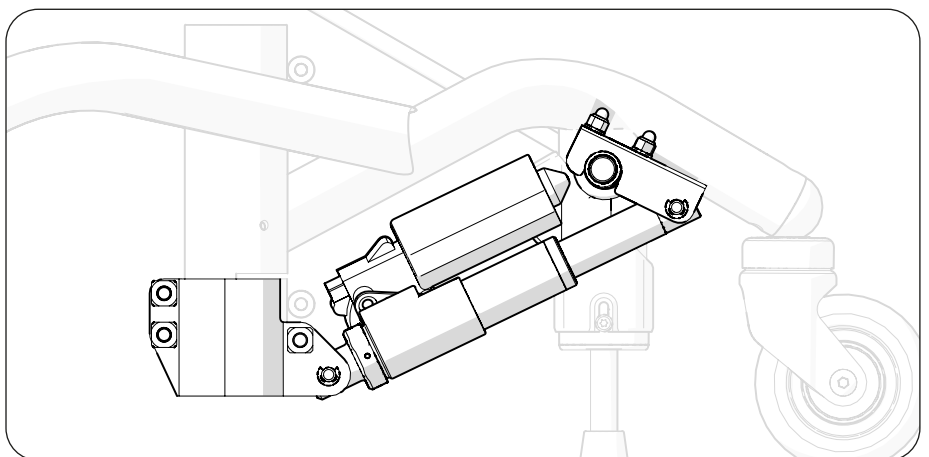
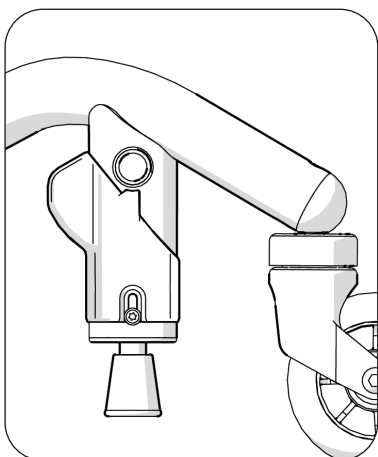
Start by finding out the type of base on which the brake is mounted. Examine this by checking in which direction the brake cam and the brake guard on the brake leg is pointing (see illustrations below). If they point backwards, the base has a backward brake function and if they point forwards, the base has a forward brake function.

Activate the brake function so that the actuator is in its end position as shown below.

### Base with a backward brake function



### Base with a forward brake function

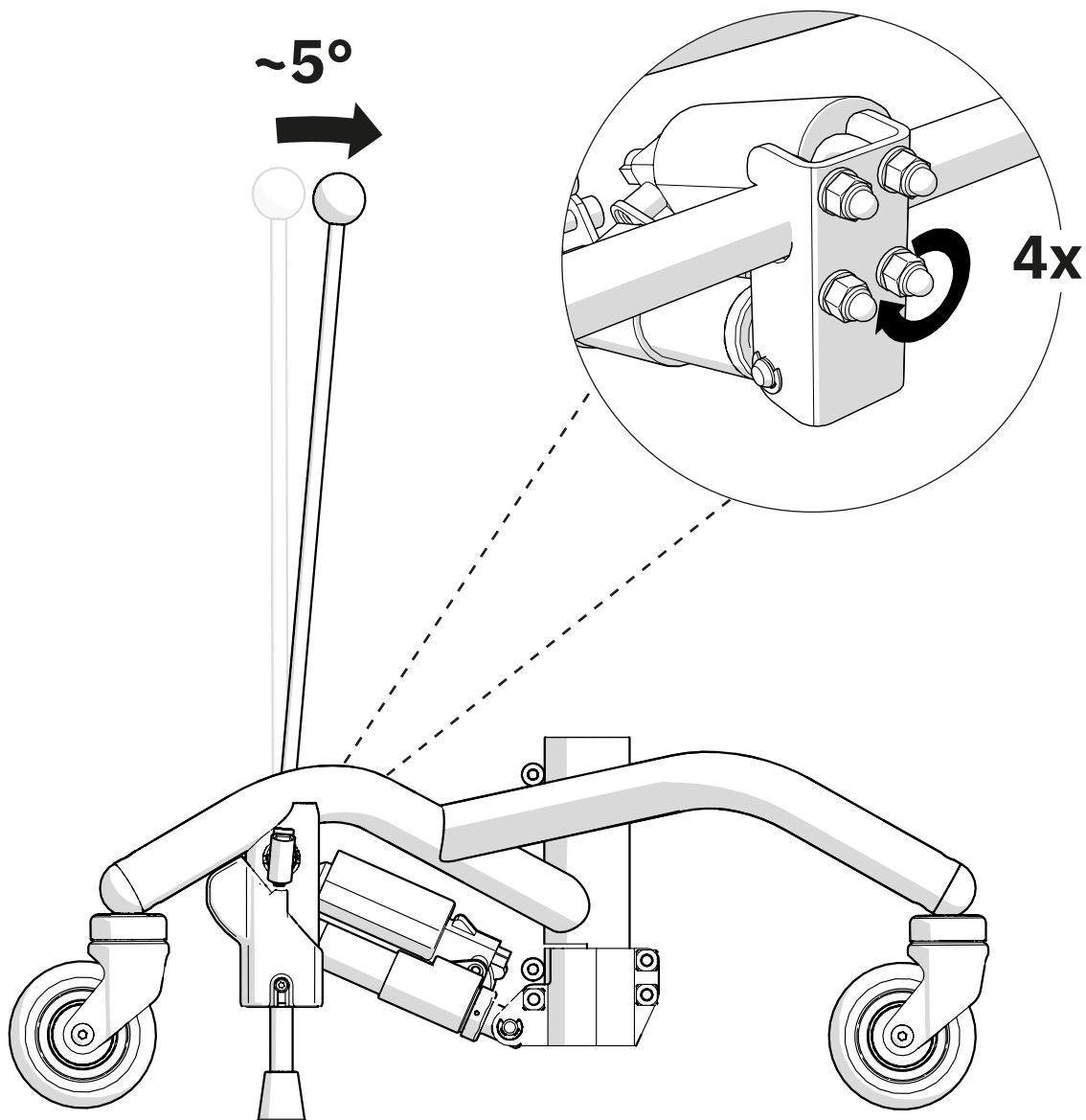




## 4.8. Positioning of the brake cam

Make sure the base is braked.

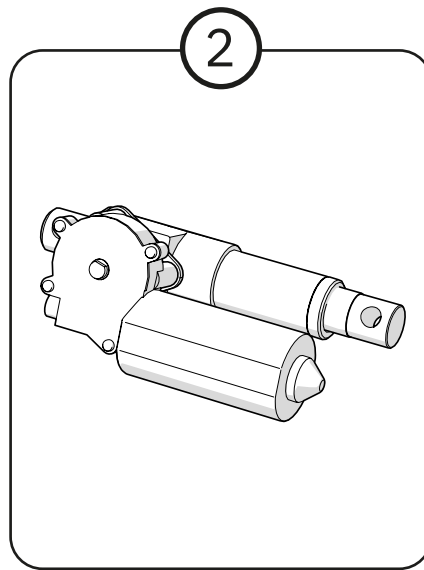
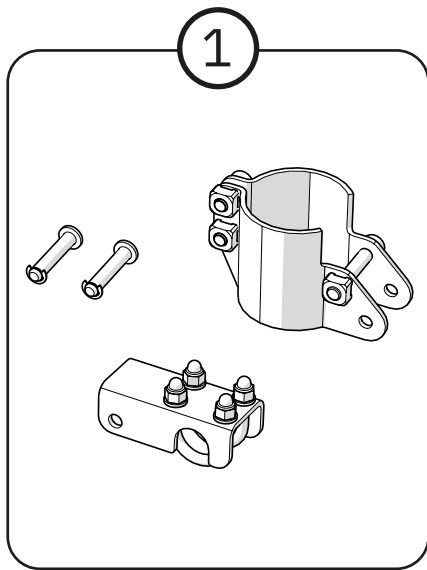
From the braked position, angle the brake lever about 5 degrees forwards (the illustration below shows a base with a backward brake function). Continue to hold the brake lever while tightening the 4 dome nuts on the axle mount. All nuts should be tightened evenly by applying the same force.



## 5. Care instructions

No specific care instructions for this item. Follow the instructions in the manual.

## 6. Destruction and recycling



1. Sort as metal
2. Sort as electronics

## Contact details

### Mercado Medic UK



Mercado Medic UK  
Repton House  
Ashby Road East

Burton Upon Trent, Derbyshire,  
DE15 0YZ, UK



Phone: +44 3330 033 666

Mon-Fri 08.00-16.30 (CET/CEST)



[www.mercado-medic.co.uk](http://www.mercado-medic.co.uk)

[contact@mercado-medic.co.uk](mailto:contact@mercado-medic.co.uk)



Mercado Medic AB  
Tryffelslingan 14  
SE-181 57 Lidingö  
SWEDEN

Phone: +46 8 555 143 00  
E-mail: [info@mercado.se](mailto:info@mercado.se)