



ENG

ELECTRIC BRAKE REAL 9000 PLUS

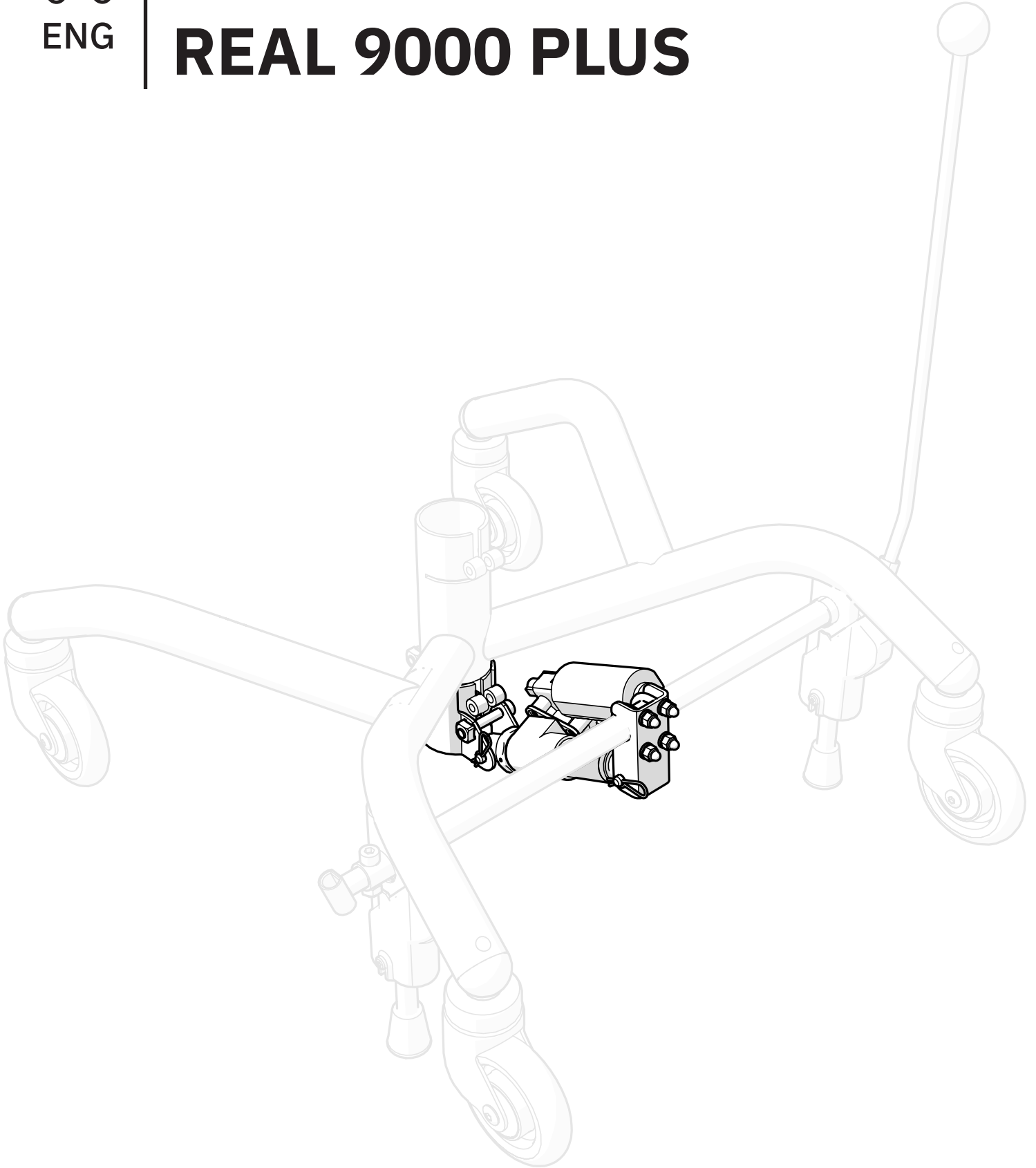
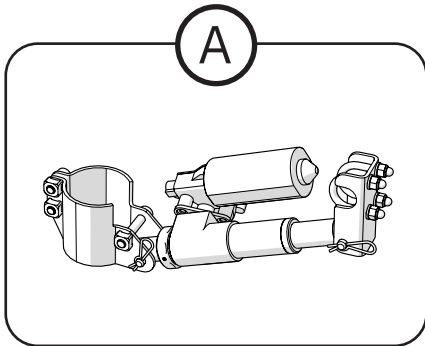


Table of contents

- 1. Item list 3
- 2. Warnings..... 3
- 3. Assembly instructions 4
 - 3.1. Pinch protection 4
 - 3.2. Apply the base's brake..... 4
 - 3.3. Mounting the brackets 5
 - 3.4. Mount the motor 6
 - 3.5. Connect the electronics..... 6
 - 3.6. Check and adjust if necessary..... 7
 - 3.7. Adjust the motor 8
 - 3.8. Positioning of the brake cam..... 9
- 4. Care instructions 10
- 5. Destruction and recycling 10

1. Item list



- Ⓐ 803037 Eldonssats f elbroms f Plus -stativ 20 Axel f reläkort
Electric kit for seat electric brake for PLUS
- 803067 Reläkortssats broms+upp/ner kpl inkl. Eldonssats elbr. Plus
Relay card kit brake + up/down compl. incl.el.kit el.br.Plus
- 803077 Eldonsskit f elbroms f manuell 9000 stol PLUS inkl batteri
Electric kit for el.brake for manual 9000P incl battery
- 803273 Eldon+Reläsats f broms f 9000 Plus exkl laddbox
Electric kit + relay card for el.brake excl.charger box
- 803276 Eldon+Reläsats f 9000 Plus f broms inkl manbox Plus tunga
Electric kit + relay card for brake incl.manoeuvre box
- 803899 Eldon+Reläsats f 9000 Plus f broms inkl manbox Plus slät
Electric kit+Relay f 9000P f brake incl manoeuvre box flat
- 804482 Eldonssats broms Inkl Manbox utan tunga 24V 1G
Actuator for el.brake incl.manoeuvre box flat 24V 1G
- 804498 Eldonssats broms 24V 1G
Actuator for el.brake 24V 1G
- 804521 Eldon+Reläsats f 9000 Plus bromsknapp fram inkl manbox
Electric kit + relay card f 9000 PLUS brake button front incl.
manoeuvre box
- 804548 Elbromskit kpl f manuell stol m manöverbox u tunga 24V 1G
El.brake kit for man.chair incl.manoeuvre box flat 24V 1G
- 804621 Eldonssats broms Inkl manbox med tunga 24V 1G
Actuator for el.brake incl. manoeuvre box ext button 24V 1G
- 804627 Elbromskit kpl f manuell stol m manöverbox med tunga
24V 1G
El.brake kit man.chair incl. manoeuvre box ext button 24V 1G

2. Warnings



Warning!

1. Please note that there is a risk of pinching between the base and brake cam if pinch protection is missing.
2. There is a risk of pinching between the actuator and brake shaft during installation.

3. Assembly instructions

Most of the instructions shown will be for a base with backward brake function, but the instructions also apply for bases with a forward brake function.

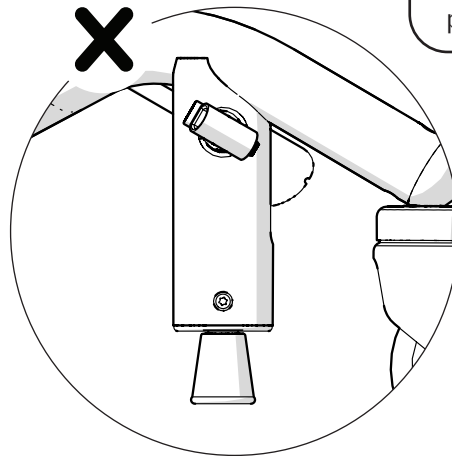
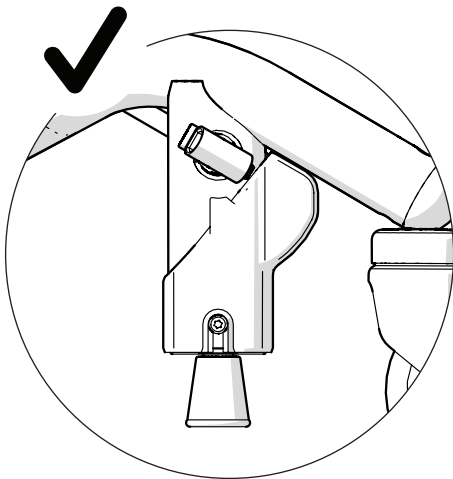
i The installation instructions are supplemented with *Wiring Guide 24V1G* or *REAL 9000 PLUS Electronics* that can be found at mercado.se/en.

3.1. Pinch protection

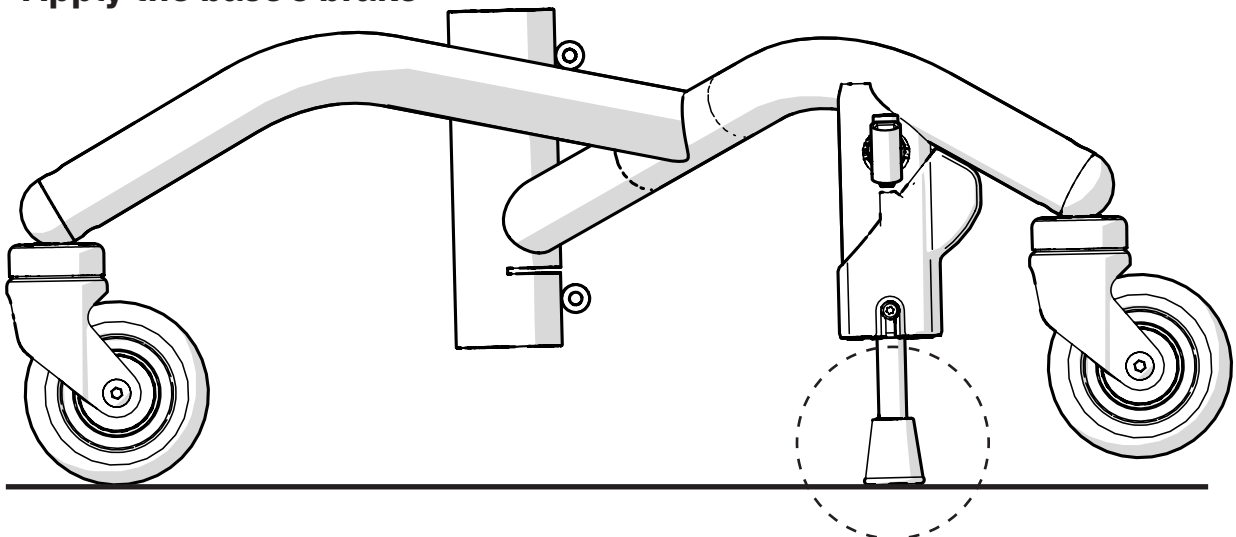
Check that pinch protection is fitted. If missing, it can be ordered in our web shop. Article number 805192.



Electric brake must not be used without pinch protection fitted!



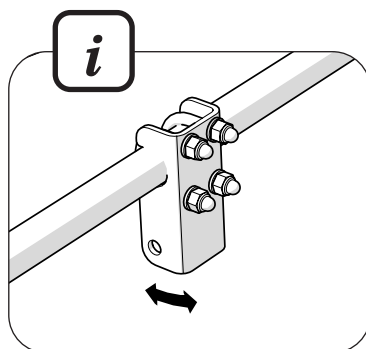
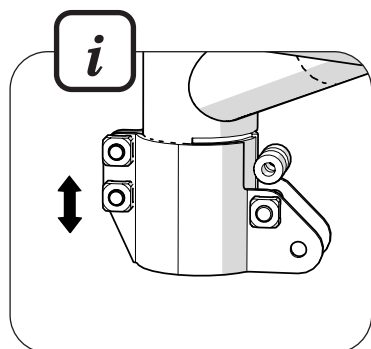
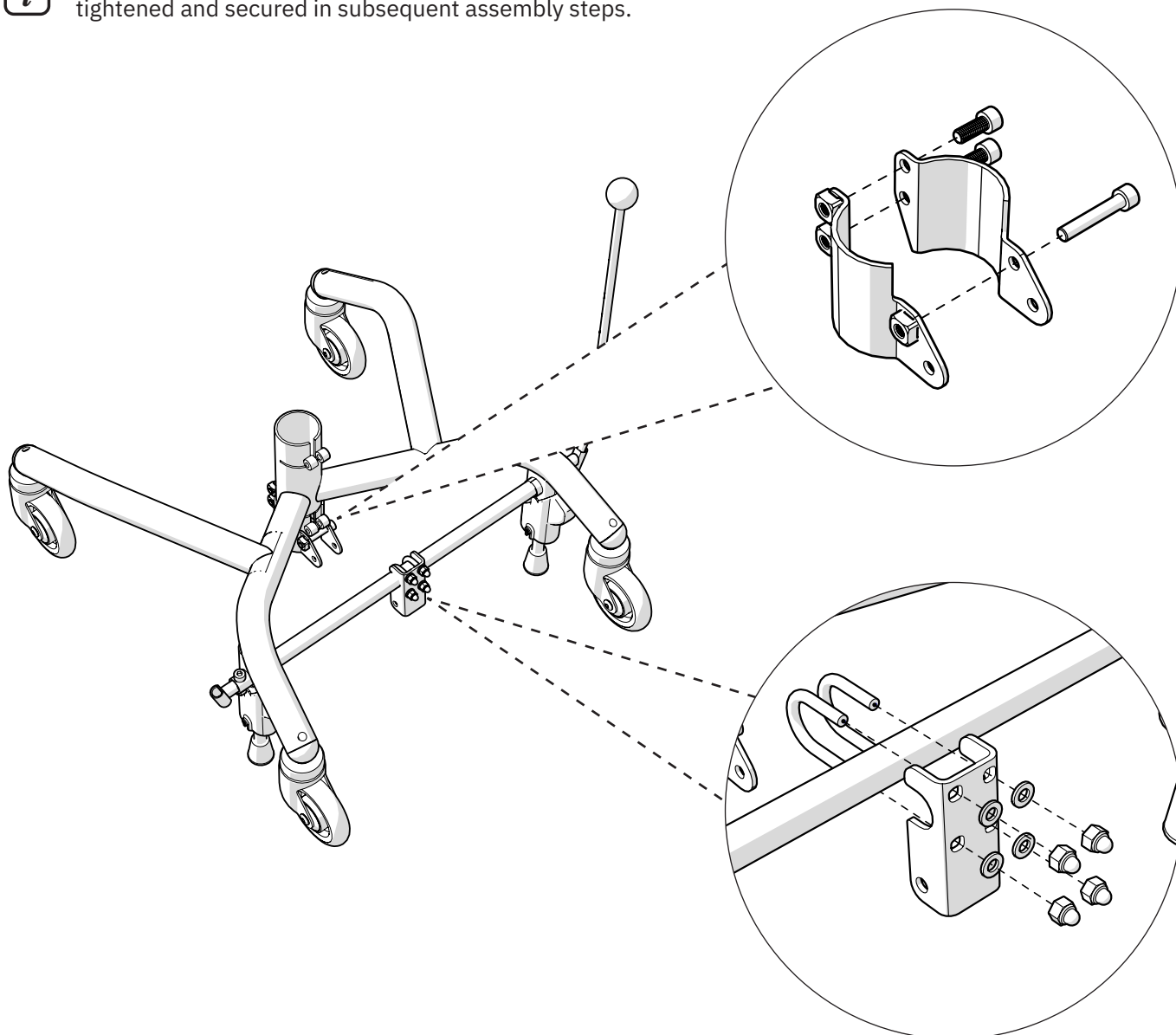
3.2. Apply the base's brake



3.3. Mounting the brackets

Fit the respective bracket to the centre tube and the brake shaft. Screw the screws in by hand without tightening.

i Both brackets should be adjustable. These will be tightened and secured in subsequent assembly steps.

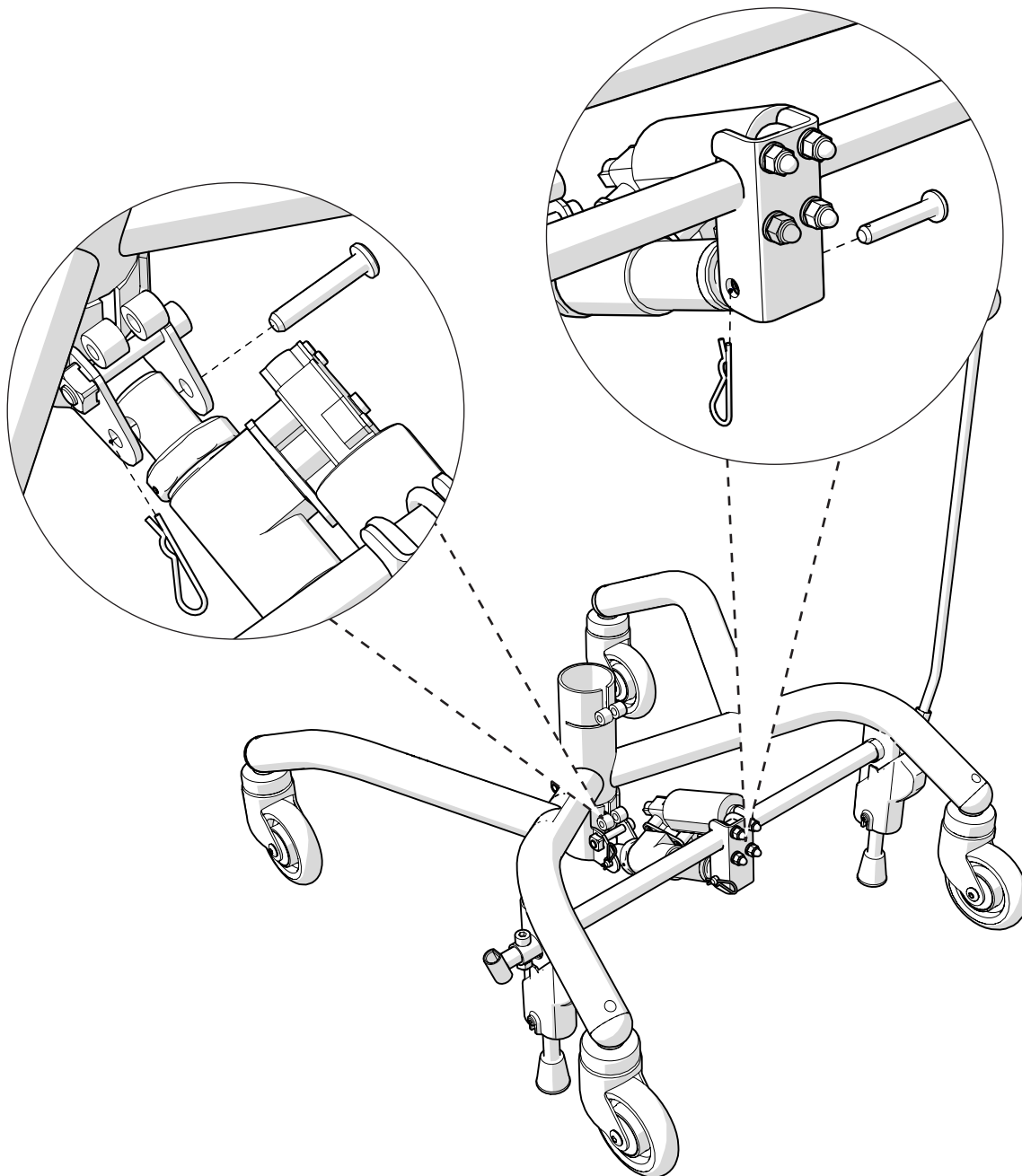


3.4. Mount the motor

Fit the motor into both brackets using the cylinder bolts. Lock the cylinder bolts using the locking pins.

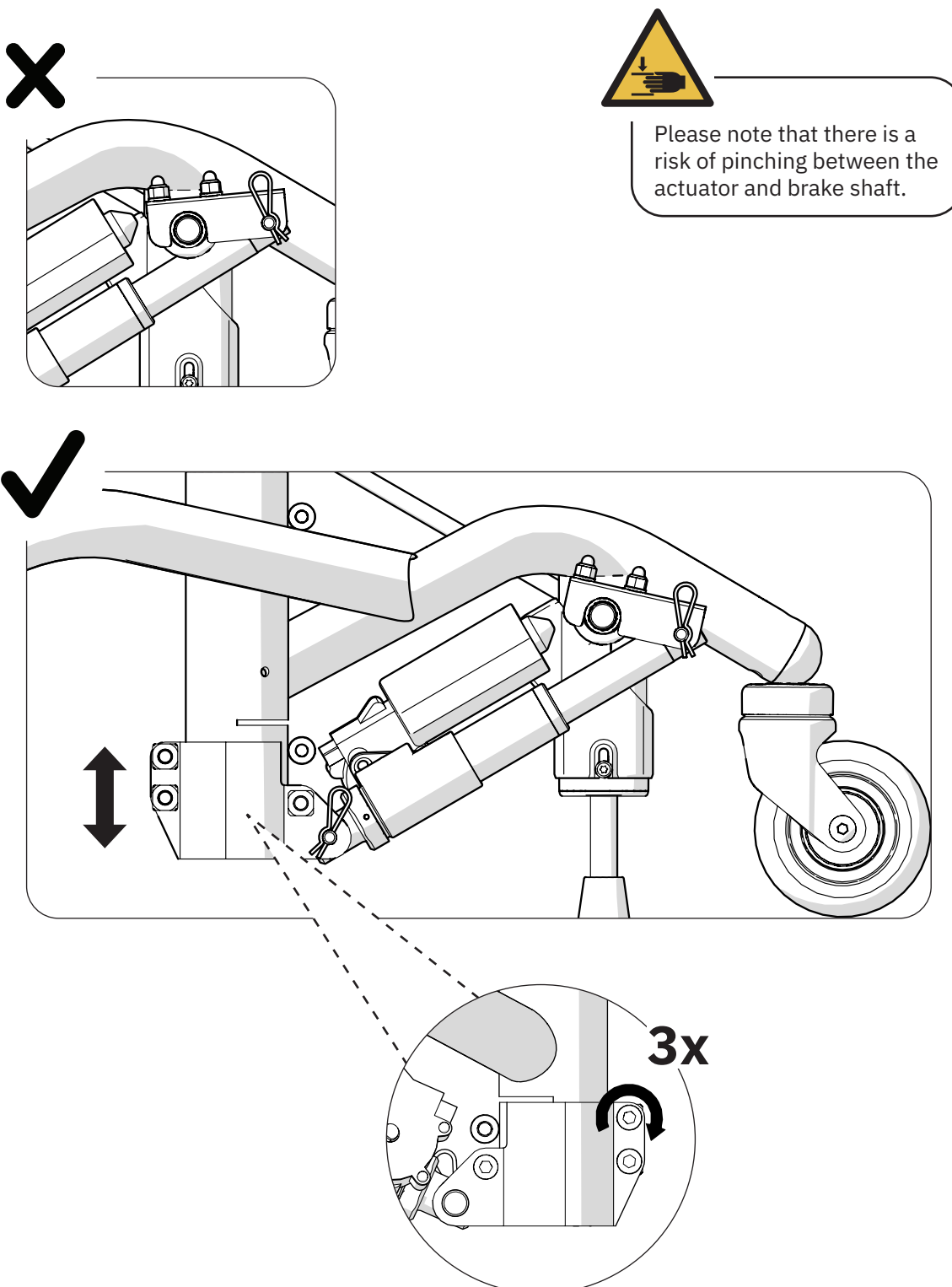
3.5. Connect the electronics

For information on how to connect the electronics, see the *Wiring Guide 24V1G* or *REAL 9000 PLUS Electronics* document that can be found at mercado.se/en.



3.6. Check and adjust if necessary

Check that the actuator axle does not collide with the brake axle bracket or the brake axle. If there is a risk of collision, adjust the vertical position of the centre bracket. Tighten the screws once there is no risk of collision or pinching.

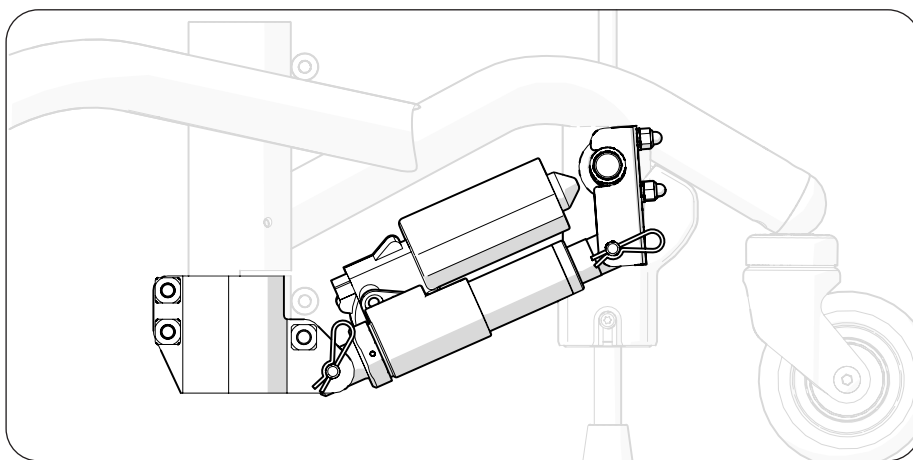
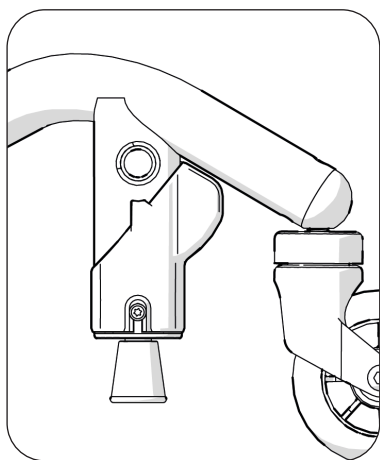


3.7. Adjust the motor

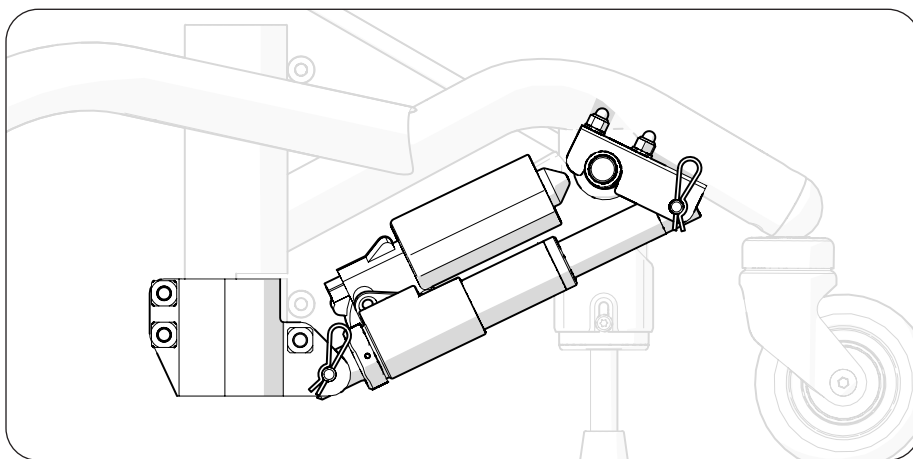
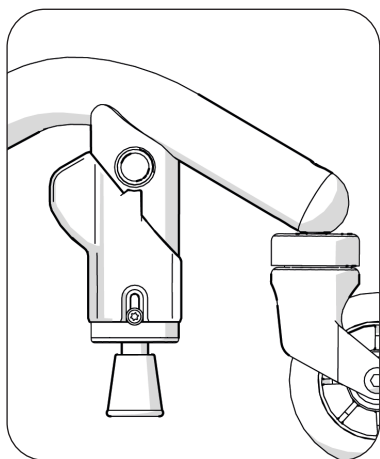
Start by finding out on what type of base the brake is mounted. Examine this by checking in which direction the brake cam and the brake guard on the brake leg is pointing (see illustrations below). If they point backwards, the base has a backward brake function and if they point forwards, the base has a forward brake function.

Activate the brake function so that the actuator is in its end position as shown below.

Base with a backward brake function



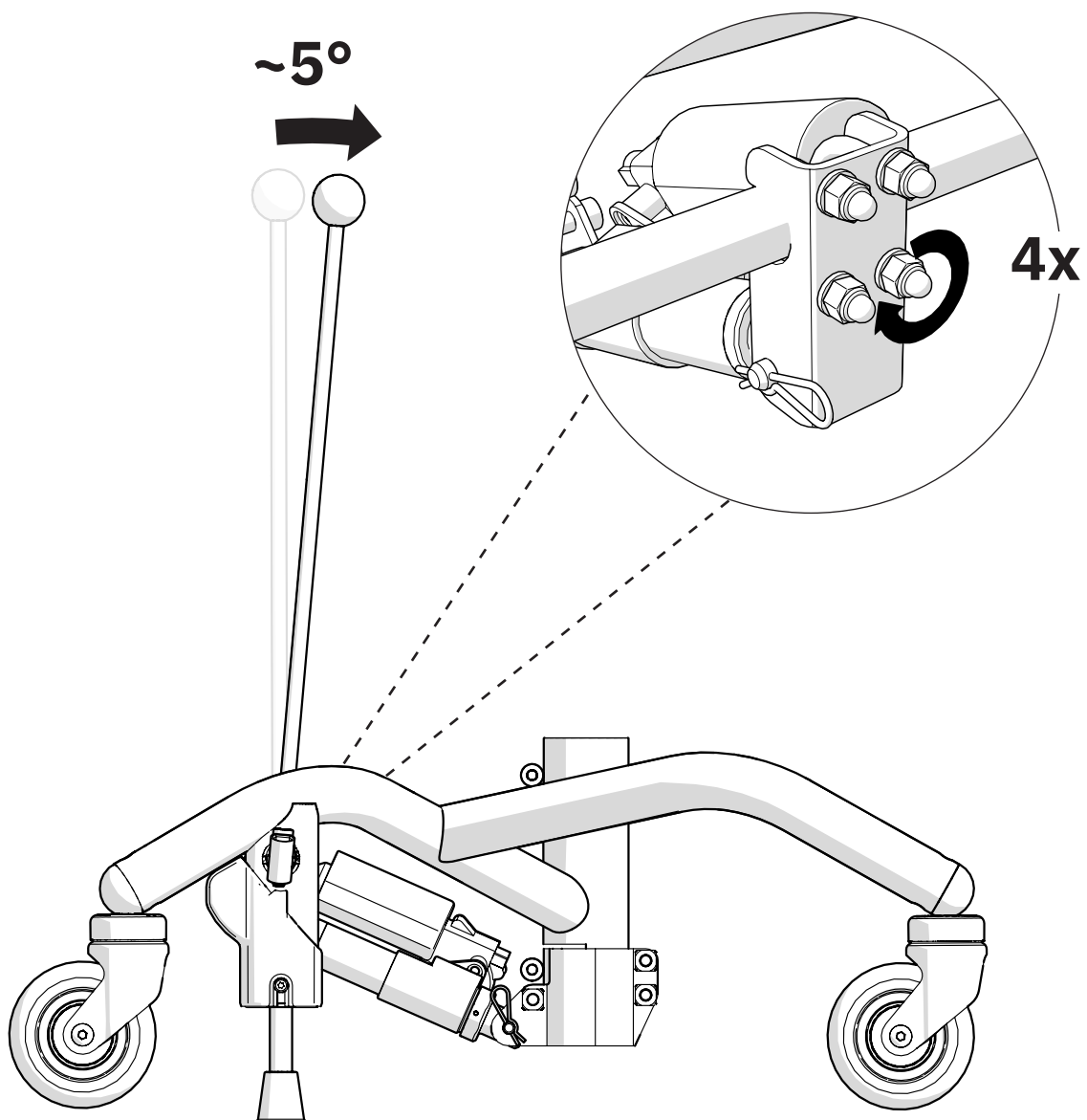
Base with a forward brake function



3.8. Positioning of the brake cam

Make sure the base is braked.

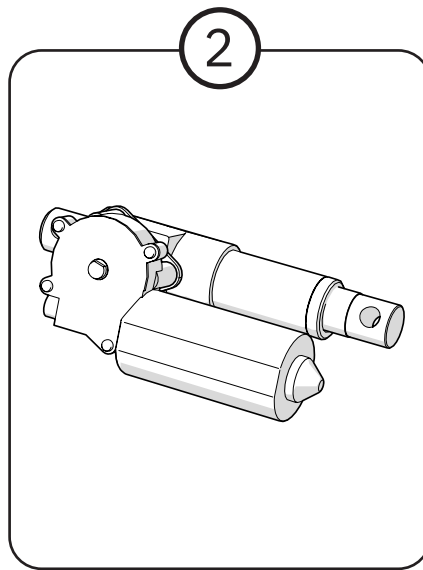
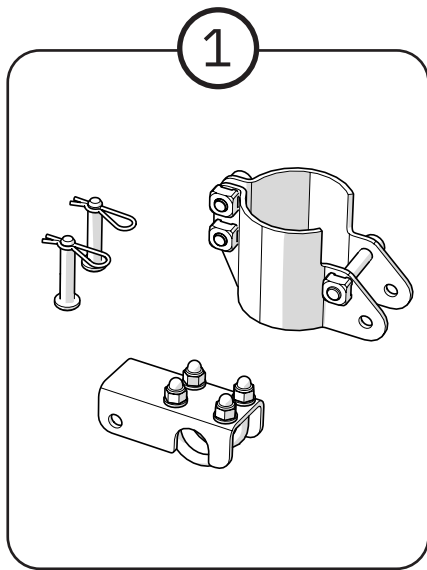
From the braked position, angle the brake lever about 5 degrees forwards (the illustration below shows a base with a backward brake function). Continue to hold the brake lever while tightening the 4 dome nuts on the axle mount. All nuts should be tightened evenly by applying the same force.



4. Care instructions

No specific care instructions for this item. Follow the instructions in the manual.

5. Destruction and recycling



1. Sort as metal
2. Sort as electronics

Contact information

Mercado Medic UK



Mercado Medic UK

Repton House

Ashby Road East

Burton Upon Trent, Derbyshire,
DE15 0YZ, UK



Phone: +44 3330 033 666



www.mercado-medic.co.uk

contact@mercado-medic.co.uk



Mercado Medic AB
Tryffelslingan 14
SE-181 57 Lidingö
SWEDEN

Phone: +46 8 555 143 00
E-mail: info@mercado.se