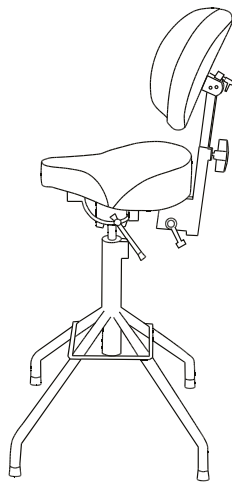
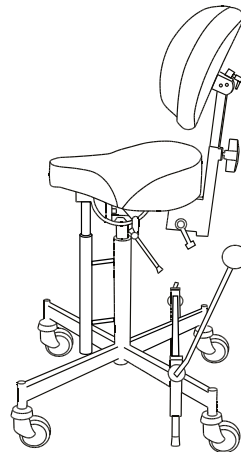


REAL 2000 is for people who need to relieve the hip, knee or ankle during standing work and for people with seated work in a forward-leaning position. Provides back relief.

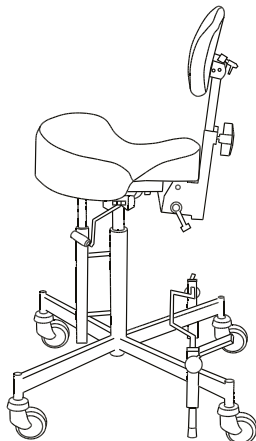
According to the model designations specified below, the REAL chair is CE marked in accordance with the Swedish Medical Products Agency's code of statutes for medical devices LVFS 2003:11



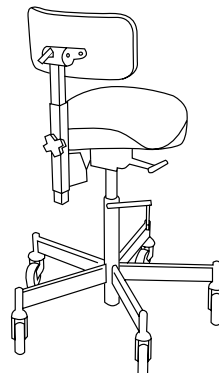
REAL 2011



REAL 2015



REAL 2624



REAL 2625

FAMILIARISE YOURSELF WITH YOUR REAL 2000

CHECKPOINTS BEFORE USE

1. Fit the back/abdominal support post in the intended bracket and lock the knob for height adjustment of the back/abdominal support.
2. Fit the brake lever in the intended bracket (left or right side).
3. All knobs and levers must be tightened before sitting in the chair.
4. The brake on the chair must always be applied when getting in and out of the chair.
5. Before using the chair, lock the seat angle properly. Tighten the seat tilt regularly.

IMPORTANT INFORMATION & CLASS

The REAL chair has exchangeable components, accessories and functions with setting options for individual adaptation. The chair must only be used by the person for whom it was prescribed and for the purpose for which it is intended. The chair is intended for indoor use and must not be exposed to water, other fluids or chemicals. Nor may it be exposed to high temperatures, prolonged and intense sunlight or other forms of radiation. The chair must not be equipped with any accessories or components other than those approved by Mercado Medic AB. To maintain the CE marking, modifications or changes must not be carried out without Mercado Medic AB's approval <http://www.mercado.se/pdf/swe/3/anpassning.pdf>. Repairs and other technical measures may only be carried out by personnel authorised by Mercado Medic AB. Read this manual carefully before using the chair for the first time.

- Maximum user weight REAL 2000: 130 kg.
- The chair must be transported in the intended cardboard box on a pallet. It must be stored indoors at a temperature of at least +10°C.
- This symbol warns there is a risk of crushing.



EXPECTED SERVICE LIFE

The expected service life of the Product is ten years when used in accordance with the instructions in this manual. The Product's date of manufacture can be found together with the serial number on one of the silver labels on the Product's chassis, marked with Lev/Del and stated in the format YYWW (number of year and week).

As a user of the Product, you should contact your prescriber, technical aids centre or distributor if the Product shows reduced or altered performance.

After the expected service life, it is important to make an overall assessment of the Product before continuing to use it. After the expected service life, Mercado Medic AB cannot guarantee the suitability and safety of the product, as Mercado Medic AB has no control over how the product has been used and wear and tear. The overall assessment of the Product should be carried out by the healthcare organisation if the product is prescribed, and, as a minimum, should take into account how the Product has been used, the condition of the Product and its component parts, whether the Product has been reconditioned and been serviced, when this occurred, what actions have been taken on these occasions and the reason for the actions.

In markets outside Sweden and Norway where a distributor has sold the Product directly to the user (where applicable), and therefore there is no responsible prescriber, periodic maintenance must be carried out according to instructions in the section Reconditioning and Service in addition to the overall assessment above.

After the expected service life, Mercado Medic AB cannot guarantee the provision of spare parts. CE marking is not affected by expected service life.

CLEANING AND CARE

The chair should be wiped down and kept free from dust and dirt.

Upholstery should be washed using a foam wash:

1. Remove loose dirt, crumbs and the like.
2. Apply a thin layer of foam and rub the foam in evenly with a damp cloth.
3. Wipe with a clean and lightly dampened cloth.
4. Vacuum well once everything has dried.

For functional reasons, seats, backrests and other padded parts are not made from impermeable materials. Padded parts should be replaced during reconditioning for hygienic reasons. The lifting mechanism must be checked regularly for dust, dirt and stability: raise the seat to its highest position. Clean with a cloth. Do not use any water or solvents. Then lubricate the cylinder using a thin layer of Teflon or silicone-based grease.

INSTRUCTIONS FOR DESTRUCTION

Combustible:

- Seat
- Backrest
- Armrest
- Neck support
- Other padded parts sold by Mercado Medic AB

Electronic waste:

- Motors
- Cables
- Control system

Metal:

- Base
- Electric lifting mechanism
- Gas pistons
- Gas springs
- Seat frame
- Backrest mechanism
- U-bars and armrest mechanism
- Other metal parts in products sold by Mercado Medic AB

NOTE! Battery has to be sorted separately.

RECONDITIONING AND SERVICE

! Important information when reconditioning and servicing REAL 2000 (called the Product below):

- The Product does not require periodic maintenance in cases where it has a responsible prescriber in the healthcare sector. In markets outside of Sweden and Norway where a distributor has sold the Product directly to the user (where applicable), and therefore there is no responsible prescriber, periodic maintenance must be performed every other year during the Product's entire life cycle in accordance with sections 1-11 in this section.
- A thorough visual inspection must be performed of the Product's main components in connection with service and reconditioning in order to ensure the user's safety. These include the base, lifting mechanism, seat frame, back recliner and U-bars for armrests. The inspection must include welds, lockable functions and settings.
- The user must not sit in the Product while it is being reconditioned or serviced or during maintenance.
- Do not use high pressure washers when cleaning the Product.
- In case of reduced braking action, check both the stability of the base and the condition of the brake rubber. If the Product is not resting on all four wheels in the unbraked position, the Product must be withdrawn from service immediately. Check for instability in different locations and directions to rule out the floor as the cause of any instability.

1. Fix lifting mechanism

- 1. function/cleaning
- 2. lubrication
- 3. attachment/tightening

2. Fixation

- 1. function / attachment
- 2. plastic bushing / lubrication
- 3. bottom plug supplement
- 4. rot. disk/ attachment / function

3. Chassis

- 1. welds

4. Seat frame

- 1. mechanical/welds
- 2. bolted joints/tightening
- 3. plastic plugs/bushings
- 4. seat/cleaning/change

5. Seat tilt

- 1. wear on moving parts
- 2. manual angling/locking
- 3. control / lubrication

6. Back mechanism

- 1. function/wear
- 2. attachment/tightening
- 3. plastic plugs/bushings
- 4. backrest/cleaning/change

7. Armrests (option)

- 1. function/wear
- 2. plastic plugs/bushings
- 3. armrests/cleaning/change
- 4. controls under armrest/function
- 5. control box/joystick/charger connector

8. Castors (option)

- 1. castor / wheeled foot option

9. Upholstery accessories

- 1. cover upholstery

10. Cleaning

- 1. base
- 2. padded parts
- 3. other mechanisms

11. Brake

- 1. function/lift height
- 2. function/bearings
- 3. wear brake rubber
- 4. brake lever

Do not use high pressure when cleaning because it penetrates into bearings, etc., resulting in excessive wear.

GUIDELINES FOR INDIVIDUAL ADAPTATION OF MERCADO MEDIC AB's PRODUCTS

Adjustments may be made only by staff who have completed Mercado Medic AB's training for service and reconditioning. Parts that are on the list of current combination agreements at www.mercado.se/mercado-dokument may be fitted while retaining Mercado Medic AB's CE marking. Before fitting a part that is not on the list of current combination agreements, the customer's authorised personnel must contact Mercado Medic AB for written approval.

Parts to be evaluated must be sent physically to Mercado Medic AB, either by the customer or the supplier of the part in question. Mercado Medic AB will then contact the supplier of the part in question; if a combination agreement is deemed to be of interest, Mercado Medic AB performs a risk analysis on the part. Once the risk analysis is complete, the customer receives a written opinion.

Chairs that have been modified according to the following must be verified by Mercado Medic AB for Mercado Medic AB to retain product liability.

- Padded parts such as seats, backrests, armrests, side supports, trunk supports and headrests can be adapted so long as they do not exceed the existing external dimensions on the product.
- The centre of gravity over lifting devices must be maintained/centred for optimum function.
- Padded parts must be able to withstand the applicable flammability requirements and other environmental requirements.
- Surfaces that are loaded with significant vertical forces must not fall outside the area (base) that is formed by the points of the castor centres.

If these guidelines are met, Mercado Medic AB retains the product liability for its product.

Products that are specially modified by the health care services outside Mercado Medic AB's directive, where the health care services also take over the product liability, can be restored to their original condition. This must be carried out by an authorised technician approved by Mercado Medic AB. Mercado Medic AB then takes back product liability in accordance with the CE marking 93/42 EEC; Medical Devices Directive MDD.

If you have any questions regarding adaptations/special adaptations, contact Ronny Fogelqvist:

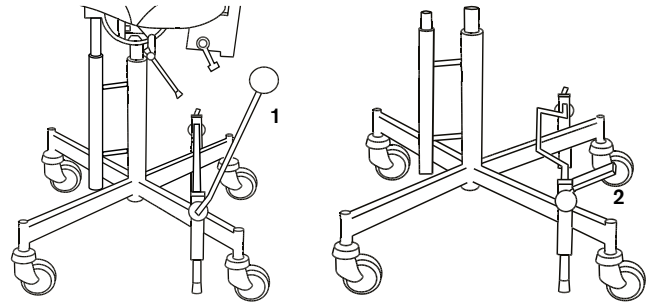
Tel. **+46 (0)708 27 96 14**

E-mail ronny.fogelqvist@mercado.se

BRAKE

NOTE! The brake on the chair must always be applied when getting in and out of the chair. The brake must be checked on a regular basis. In case of wear, change the brake rubber. The braking function may be reduced on uneven surfaces.

THERE ARE THREE TYPES OF BRAKE:
brake lever and foot brake.



CONTROLS

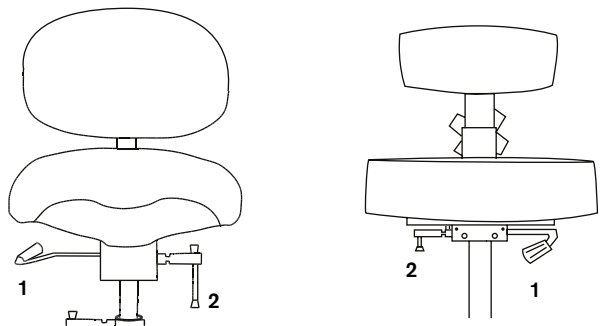
1. Handbrake – move lever forwards.
2. Foot brake – press the pedal down.

SEAT HEIGHT AND ROTATION RELEASE

NOTE! Check to see if the rotation lock is locked. If the chair is not rotationally locked, be careful when getting off/on the chair.

CONTROLS

1. Seat height. Gas spring – move lever up. The seat cannot be loaded when it has to be raised.
2. Turn clockwise to disengage, and counterclockwise to lock.

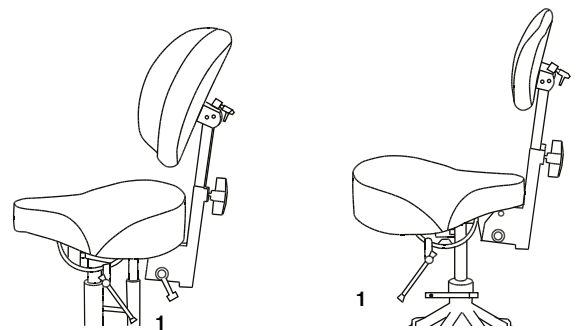


SEAT TILT

NOTE! Before using the chair, lock the seat tilt properly. Tighten the seat angle regularly.

CONTROLS

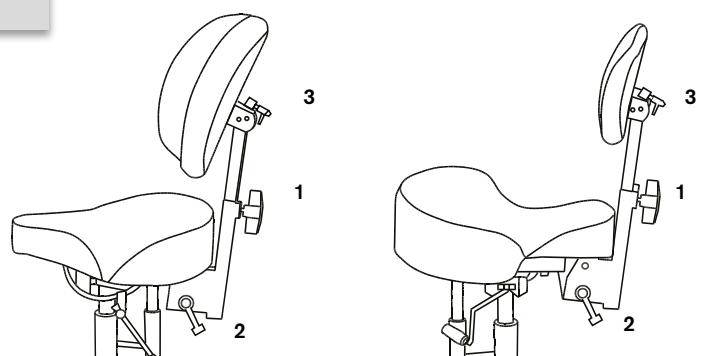
1. Seat angle. Loosen the knob, set the desired seat tilt. Lock the knob.



BACK/ABDOMINAL MECHANISM

CONTROLS

1. Height.
2. Angle of mechanism.
3. Backrest/abdominal rest angle.



CONTACT MERCADO

Head office

Tryffelslingan 14, SE-181 57 Lidingö

Postal address

Box 1074, SE-181 22 Lidingö

The switchboard is open:

Mon-Fri 08.00-16.30 (CET/CEST)

Tel: +46 (0)8-555 143 00

Fax: +46 (0)8-555 143 99

E-mail: info@mercado.se

Service and technical support

Box 1074, SE-181 22 Lidingö

Telephone hours for the service line:

Mon-Fri 08.00-12.00 and 13.00-16.00 (CET/CEST)

Tel: +46 (0)8-555 143 08

Fax: +46 (0)8-555 143 99

Mobile phone:

+46 (0)70-550 63 98, +46 (0)70-894 63 68

E-mail: service@mercado.se

[Space for product label with serial number.]



Mercado Medic AB
Tryffelslingan 14
SE-181 57 Lidingö

Telephone & Fax
Tel. +46 (0)8-555 143 00
Fax +46 (0)8-555 143 99

E-mail & Internet
E-mail info@mercado.se
Internet www.mercado.se