

Explanation of item list

Position number	Detail
1-100	Frame details
101-200	Wheel and engine details
201-300	Seat frame details
301-400	Leg support details
401-500	Arm rest details
501-600	Back rest details

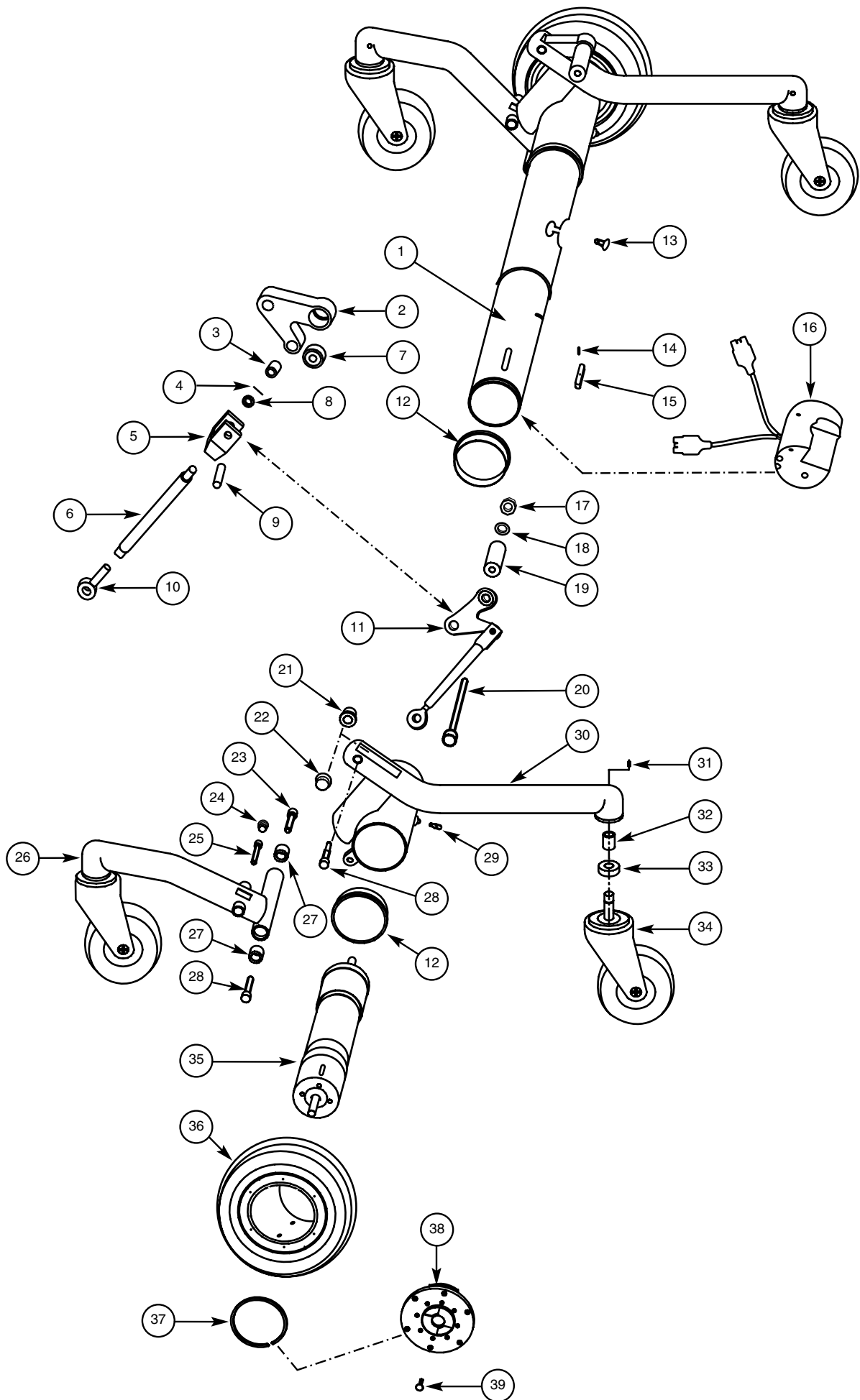
Where more than one option is available in one position, these are marked with A, B C etc.

Articles in **bold** is complete units, that contains more details.

Item list

Pos	Art. nr	Code
1	600002	Central tube
	600001	Central tube Cpl. (Incl. Pos. 13, 16)
2A	600051	V-Link left
2B	600052	V-Link right
3	800071	Needle bearing (HK 0810)
4	800137	Slotted pin 2x14
5	600053	Push rod fork
6	600054	Push rod
7	800072	Lead bearing (GEH 10C)
8	800130	Steel washer (SS 8x14x1,2)
9	800132	C-Pin (CPK 8x24)
10	800064	Link head (SA8C)
11A	600049	V-Link Cpl. L. (Incl. Pos. 2A-10)
11B	600050	V-Link Cpl. R. (Incl. Pos. 2B-10)
12	600012	Guiding flange
13	800101	Socket head screw M5x10 (MF6S 5x10)
14	800110	Stop screw M3x5 (MP6SS 3x5)
15	600020	Wedge
16	600013	Contact attachment
17	800116	Lock nut M10 (HLM6M M10)
18	800124	Washer (BRB10x18x2)
19	600056	Spacer
20	801142	Socket head screw M10x80 (MC6S 10x80)
21	600045	Bushing (inner)
22	600046	Bushing (outer)
23	800085	Socket head screw M10x25 (MLC6S 10x25)
24	800073	Terminal plug IKP 16x12,5x14S
25	800088	Socket head screw M8x30 (MC6S 8x30)
26A	600058	Front leg left
26B	600057	Front leg right
27	800068	Roll bearing (GE10C)
28	600055	Axle
29	800105	Stop screw M6x10 (MT6SS 6x10)
30A	600035	Rear leg left (Incl. Pos. 21-22)
30B	600036	Rear leg right (Incl. Pos. 21-22)
31	800107	Stop screw M5x10 (MT6SS 5x10)
32	800070	Needle bearing (HK 1210)
33	800069	Ball bearing (6001-2RS1)
34	600047	Link wheel 125mm Mobil
35	600016	Prime mover Cpl. (Incl. Pos. 101-108 see page 7)
36	600021	Driving wheel Cpl. (Incl. Pos. 109-117 see page 7)
37	800145	Flanged ring (SW 70)
38	600029	Clutch mechanics Cpl. (Incl. Pos. 118-125 see page 7)
39	800150	Torxscrew M4x10 (MFT-TT 4x10 black)

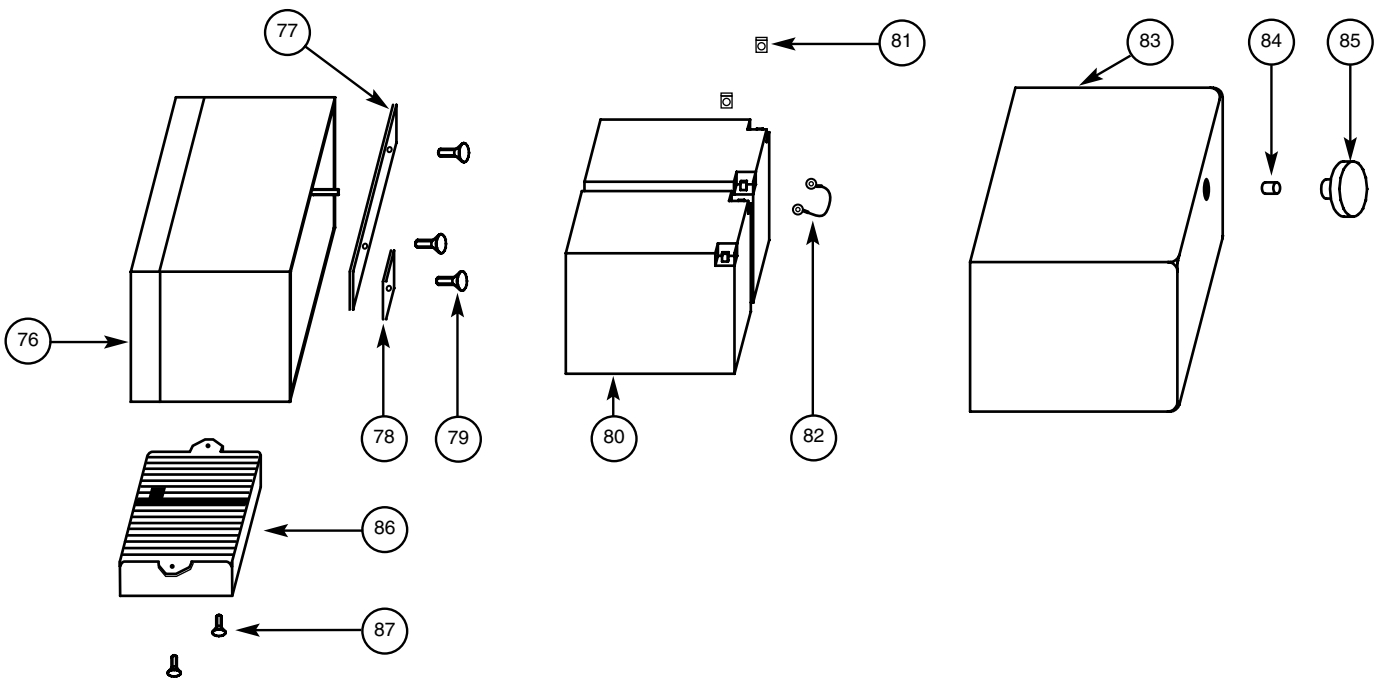
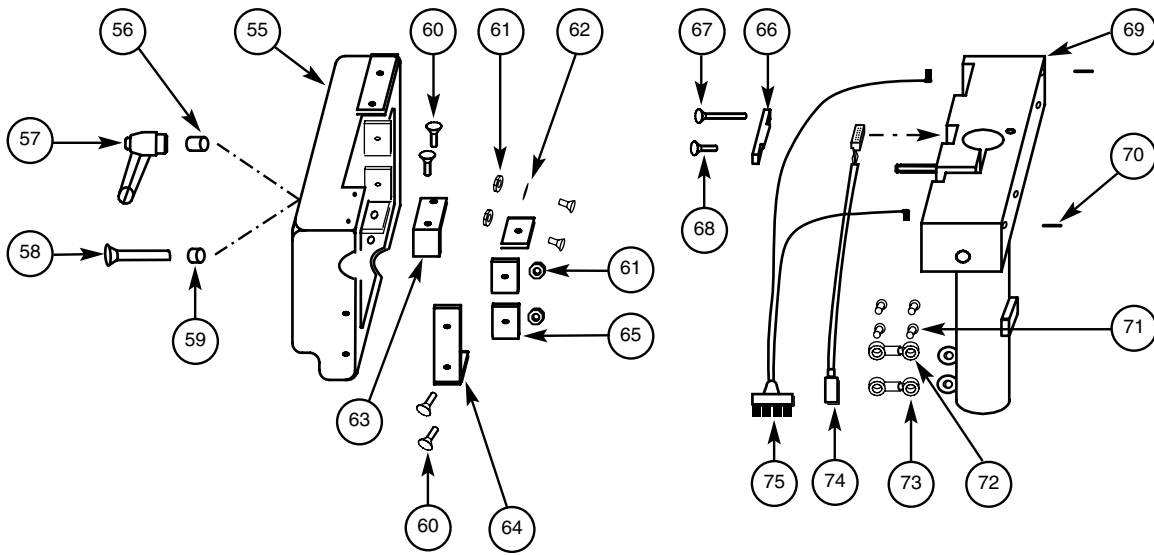
Frame details



Item list

Pos	Art. nr	Code
55	600082	Cover
56	600071	Clamping sleeve (L=20mm)
57	800074	Lock lever M8 (GN 300 S78-M8)
58	600168	Screw
59	600072	Clamping sleeve (L=13mm)
60	800099	Socket head screw M5x16 (MF6S 5x16)
61	800120	Lock nut M5 (LM6M M5)
62	800129	Washer 5.3 x10x1 (BRB 5,3x10x1)
63A	600086	Cover strip (upper left)
63B	600085	Cover strip (upper right)
64A	600084	Cover strip (lower left)
64B	600083	Cover strip (lower right)
65	600087	Guid plate
66	600078	Contact bridge
67	800112	Recessed head screw M3x25 (MRX 3x25)
68	800113	Recessed head screw M3x10 (MRX 3x10)
69	600064	Central bearer
70	800136	Slotted pin 6x16 (RPD 6x16)
71	800090	Socket head screw M8x18 (MLC6S 8x18)
72	600010	Track rod over
73	600011	Track rod under
74	600077	Cables under
75	600079	Cables
76	600073	Battery box
77	600074	Support rail
78	600075	Support washer
79	800091	Socket head screw M8x16 (MLC6S 8x16)
80	800075	Battery (Incl. Screw, Washer and nut)
81	800026	Flat pin
82	600080	Series connection cable
83	600088	Battery cover
84	600076	Guide bushing
85	800077	Star knob M6 (WN 730E 40-M6)
86	800027	Electronic Dynamic
87	801281	Socket head screw M5x8 (MC6S 5x8)

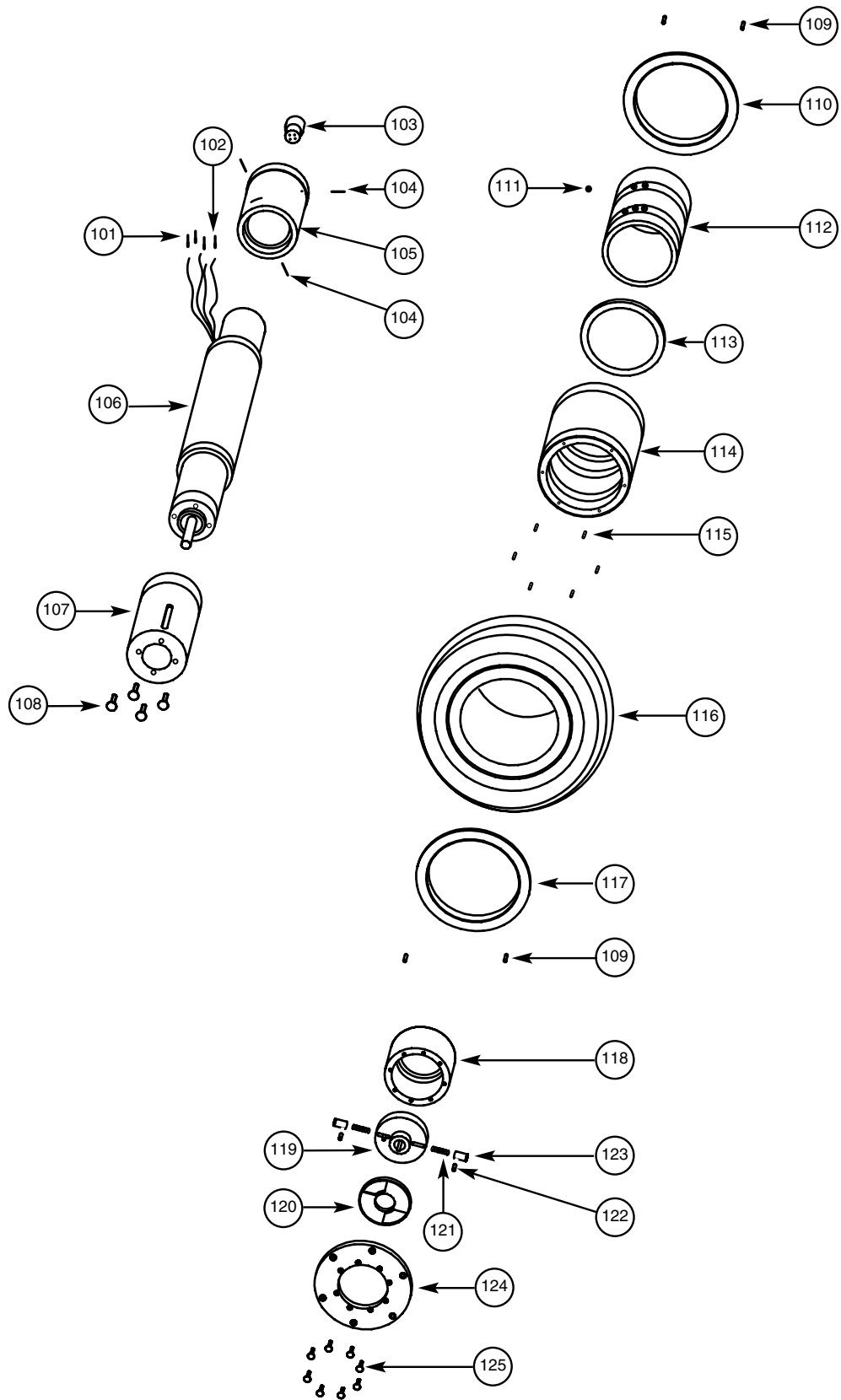
Frame details



Item list

Pos	Art. nr	Code
101	800009	Contact rail (0,75mm2)
102	800010	Contact rail (0,25mm2)
103	600015	Engine plug
104	800109	Stop screw M3x10 (MSK6SS 3x10)
105	600019	Engine plug hold
106	800065	Prime mover
107	600018	Engine bearer
108	800100	TorxScrew M5x12 (MFT-TT 5x12)
109	800138	Springing tube pin 3x5 (FRP 3x5)
110	600027	Clamping ring (inner)
111	800067	Roll bearing 8mm (RB-8/G20T)
112	600024	Inner rim
113	600026	Nitrilpacking
114	600025	Outer rim
115	800142	Socket head thread M4x8 (Lockfil M4x07x8)
116	600022	Driving wheel
117	600028	Clamping ring (outer)
118	600033	Clutch rim
119	600031	Nave
120	600032	Operating plate
121	800148	Compression spring (SF-TF 0,6x6x20)
122	800135	C-pin 4x12 (CPK 4m6x12)
123	600034	Faucet
124	600030	Nave plate
125	800151	Torxscrew M3x10 (black)

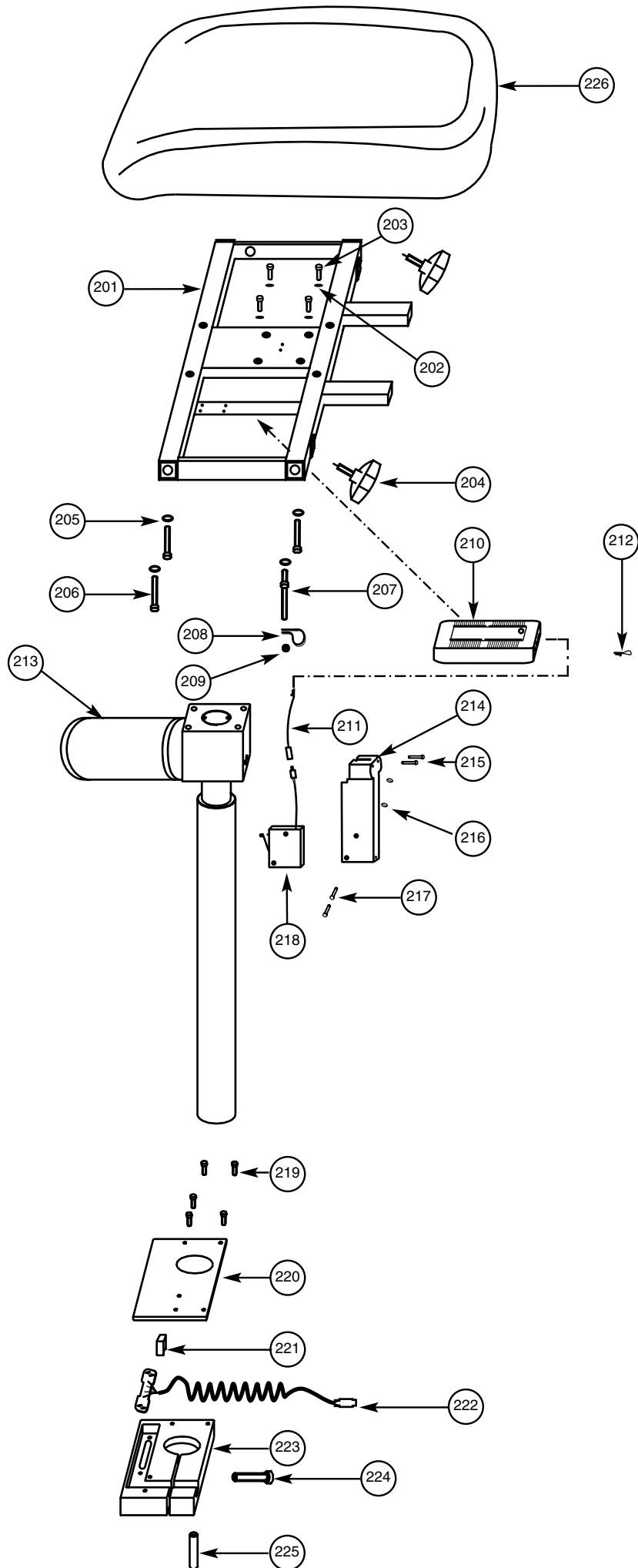
Wheel and engine details



Item list

Pos	Art. nr	Code
201A	801231	Seat frame Mobil
201B	801378	Seat frame Mobil narrow
202	800126	Washer (BRB 8.4x16x1.5)
203	800091	Socket head screw M8x16 (MLC6S 8x16)
204	800078	Star knob M8x27
205	800127	Washer (NB 6x22x1,5)
206	801253	Socket head screw M6x40 (MC6S 6x40)
207	600097	Pin screw M6x55 Cpl. (Incl. nut)
208	800039	Cable clamp
209	800117	Lock nut M6 (LM6M M6)
210A	800041	DX-TAM (2st ext. output)
210B	800048	DX-CLAM (5st ext. output)
211	600098	Cables with clamp
212	600099	Plug AMP clamp Cpl. (use in combination, short el liftomatic/DX-TAM)
213A	600177	El liftomatic 280mm lifthight
213B	600178	El liftomatic 200mmlifthight
213C	600186	El liftomatic rotation 280mm lifthight
213D	600192	El liftomatic rotation 200mm lifthight
214	600090	Micro switch attachment
215	800111	Recessed head screw M4x25 (MRX-TT 4x25)
216	800121	Lock nut M3 (LM6M M3)
217	800112	Recessed head screw M3x25 (MRX 3x25)
218	800031	Micro switch 10A 250VAC
	600089	Micro switch attachment Cpl. (Incl. Pos. 214-218)
219	800102	Socket head screw M5x10
220	600095	Cover lid
221	600094	Cable clam
222	600096	Cables
223	600092	Clamp lock
224	800084	Socket head screw M10x40 (MC6S 10x40)
225	600093	Guide
	600091	Clamp lock Cpl. (Incl. Pos. 219-225)
226		Seat (see pricelist/tryout, order form for complete list of combinations)

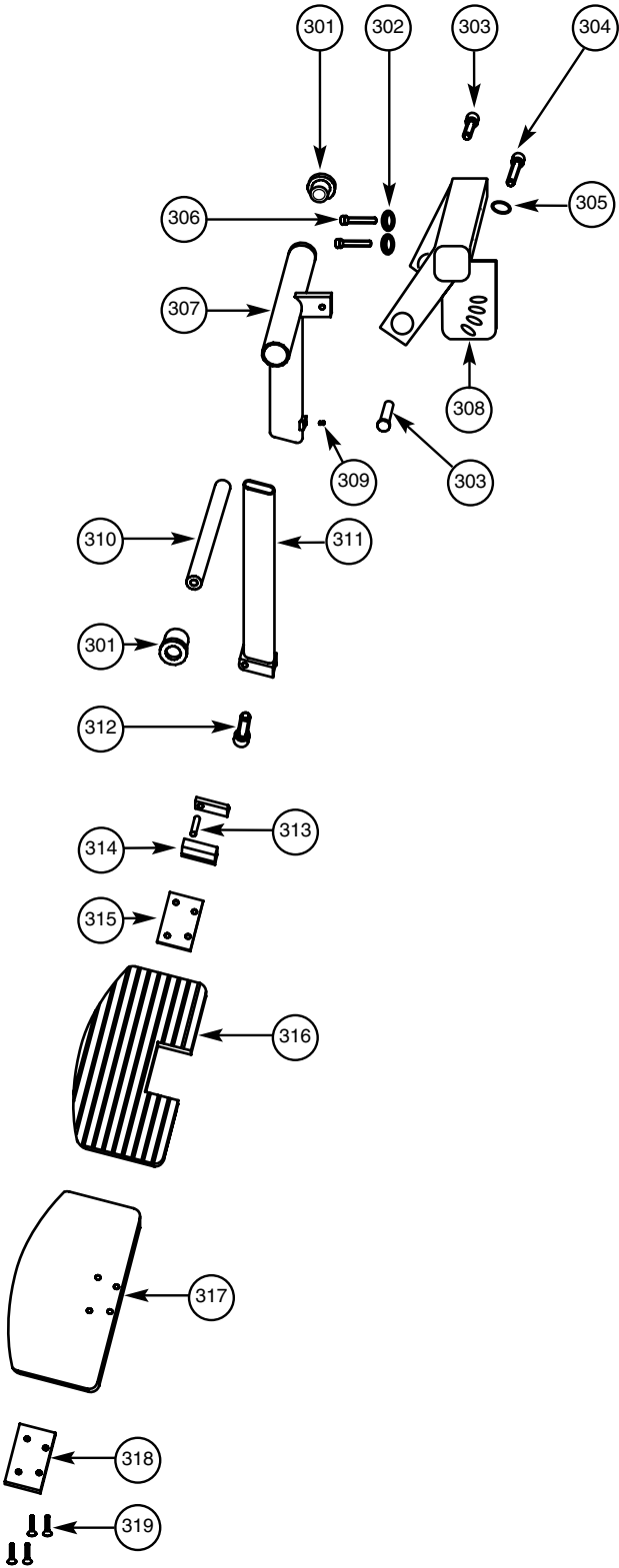
Seat frame details



Item list

Pos	Art. nr	Code
301	600112	Plastic bushing
302	800125	Washer 8,4x26x5 (TBRSB 8,4x26x5)
303	800091	Socket head screw M8x16 (MLC6S 8x16)
304	800095	Socket head screw M6x20 (MC6S 6x20)
305	800127	Washer 6x22x1,5 (NB 6x22x1,5)
306	800087	Socket head screw M8x35 (MLC6S 8x35)
307	600108	Foot rest angle mechanism
	600107	Foot rest angle mechanism Cpl. (Incl. Pos. 301,307,309,310)
308	600104	Leg support attachment Mobil
309	800106	Stop screw M6x6 (MS6SS 6x8)
310	600113	Axle bar
311	600114	Foot plate tube
312	800089	Socket head screw M8x25 (K6S 8x25)
313	800131	C-Pin 8x36 (CPK 8 h6x36)
314A	600121	Steering piece right
314B	600122	Steering piece left
315	600123	Friction plate
316	600120	Rubber mat
317	600119	Foot plate
	600118	Foot plate rubberd (Incl. Pos. 317-318)
318	600124	Support plate
319	800097	Socket head screw M5x18 (MF6S 5x18)
	600117	Foot plate Cpl. (Incl. Pos. 311-319)
	600106	Leg support Mobil Cpl. (Incl. Pos. 301-319)

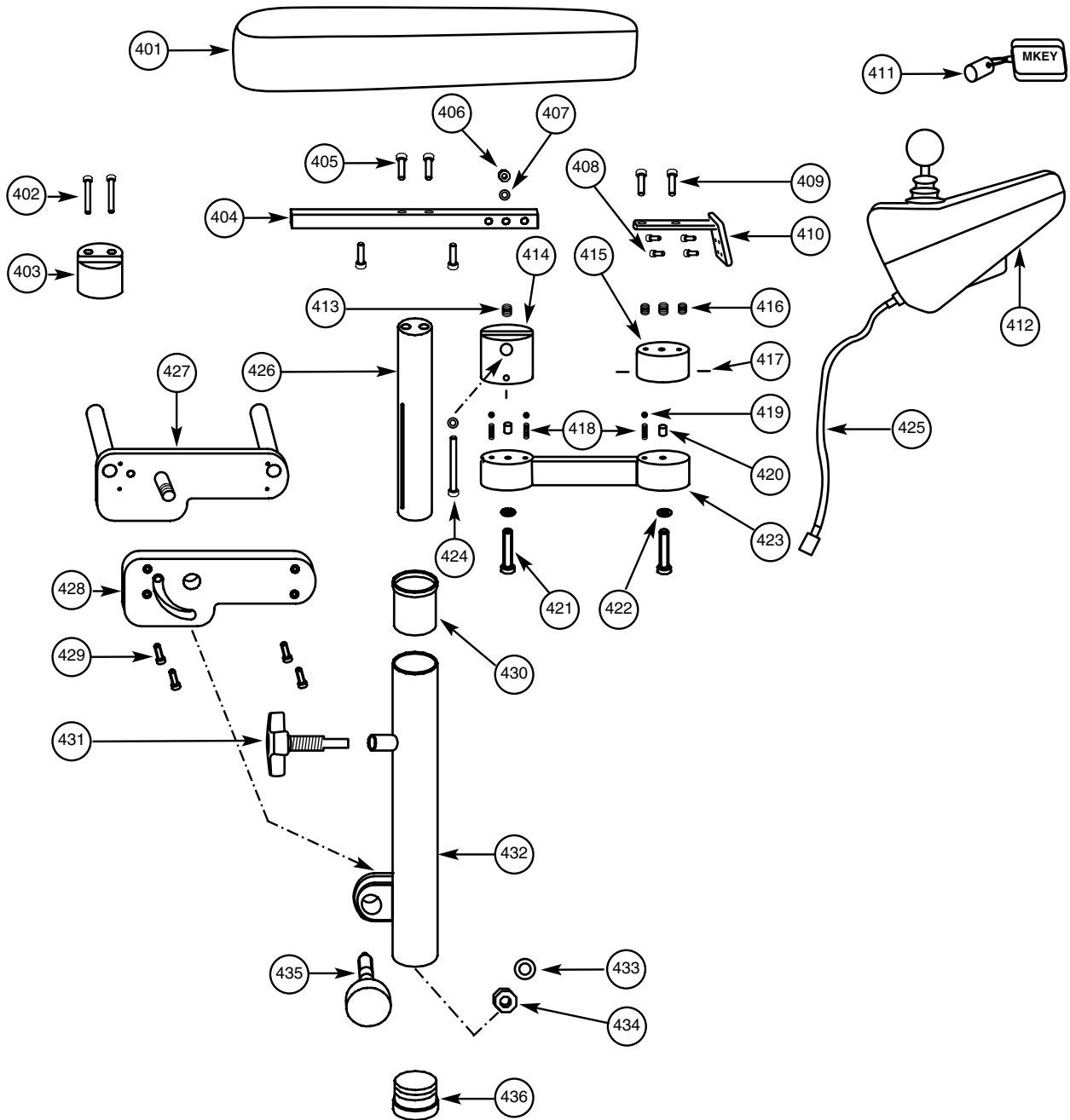
Leg support details



Item list

Pos	Art. nr	Code
	600126	Arm rest support mechanics Cpl. R.
	600125	Arm rest support mechanics Cpl. L.
	600170	Arm rest support mechanics, angle adjustable seat frame Cpl. R.
	600169	Arm rest support mechanics, angle adjustable seat frame Cpl. L.
	600172	Arm rest support mechanics, wire regulation angle adjustable seat frame Cpl. R.
	600171	Arm rest support mechanics, wire regulation angle adjustable seat frame Cpl. L.
401A	xxxxx	Arm rest plate 350mm
401B	xxxxxx	Arm rest plate 300mm
402	800092	Socket head screw M6x60 (MC6S 6x60)
403	600138	Spacer arm rest (ex. angle adjustable seat)
404A	600141	Attachment for arm rest plate
404B	600142	Attachment for arm rest plate (wire regulation angle adjustable seat)
405	800096	Socket head screw M6x16 (MC6S 6x16)
406	800117	Lock nut M6 (LM6M M6)
407	800128	Washer (BRB 6,4x12x1,5 black)
408	800102	Socket head screw M5x10 (K6S 5x10)
409	800098	Socket head screw M6x16 (K6S 6x16)
410	600166	Attachment for remote
411	800059	Magnetic key (DX-MKEY)
412	800058	Remote (DX-REM G80A)
413	800139	Socket head thread M8x12
414	600161	Link attachment for operating arm rear
	600160	Link attachment for operating arm rear Cpl. (Incl. Pos. 413,414,417)
415	600165	Link attachment for operating arm front
	600164	Link attachment for operating arm front Cpl. (Incl. Pos.413,415,416,417)
416	800140	Socket head thread M6x12
417	800108	Stop screw M4x10 (MSK6SS M4x10)
418	800147	Compression spring 1,25x6,3x13,5
419	800067	Roll bearing (RB-8/G20T)
420	800152	Spacer rail 10x1x9,5
421	800088	Socket head screw M8x30 (MC6S 8x30)
422	800144	Cup spring (SF-TAF16x8,2x0,4)
423A	600162	Operating arm 115mm cc
	600175	Operating arm 115mm. with link attachment Cpl. (Incl. Pos.413-423A)
423B	600163	Operating arm 95mm cc
	600176	Operating arm 95mm. with link attachment Cpl. (Incl. Pos.413-423B)
424	801280	Socket head screw M6x50 (MC6S 6x50)
425	800060	Operating cable (DX-BUS 1M)
426A	600136	Adjust bar right
426B	600137	Adjust bar left
427A	600144	Braces right
427B	600143	Braces left
428A	600150	Friction plate right
428B	600149	Friction plate left
429	800150	TorxScrew M4x10 (black)
430	600133	Steering arm bush
431	600139	Adjust handle
432A	600127	Arm rest support tube left Cpl. (Incl. Pos. 430)
432B	600128	Arm rest support tube right Cpl. (Incl. Pos. 430)
433	800143	Cup spring (SF-TAF25x12,2x0,9)
434	800115	Lock nut M12 (HLM6M M10)
435	600134	Lock knob Cpl.
436	800082	Terminal plug (IF 42x38x40S)

Arm rest details

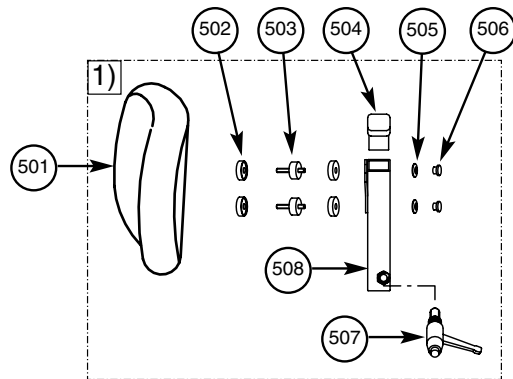


Item list

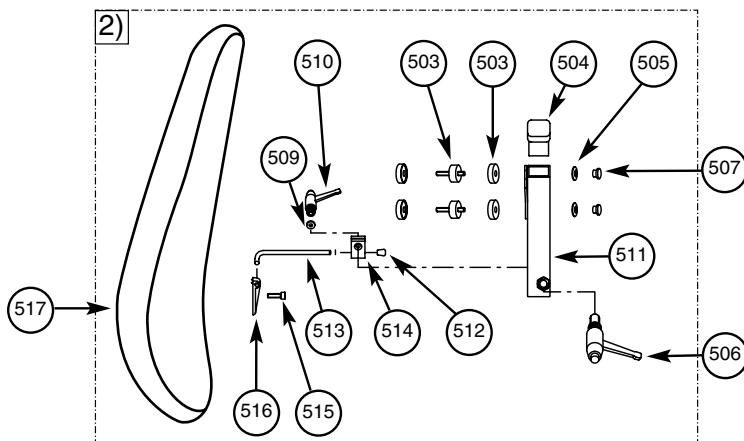
Pos	Art. nr	Code
1)	801368	Low back, Medic back mechanism
501	20xxx0	Low back rest plate 38x26 cm
502	801160	Plastic washer
503	801159	Rubber spring
504	801156	Terminal plug 25x35 mm
505	801161	Cup spring
506	801162	Tap head nut
507	801157	Plastic knob
508	801368	Upper back tube for Medic back rest mechanism
2)	801367	High back, Medic back mechanism
509	800462	Washer BRB 6,4x12x1,5
510	801158	Plastic knob
511	801367	Upper back tube Medic back rest mec. high back
512	801315	Plastic plug
513	801314	Clamp washer for back rest lock
514	801178	Rod to Medic back
515	800095	Screw MC6S M6x20
516	801163	Rod attachment for back lock
517	20xxx8	High back rest plate 42x43 cm
3)	801082	Medic back mechanism 155 mm
3)	801083	Medic back mechanism 112 mm
518		Plastic washer
519	800476	Washer BRB 8,4x21, 5x1,5
520		Plastic knob angle adjustable Medic back
521	800087	Screw MC6S M8x35
522	800477	Washer BRB 8,4x20x1,5
523	801369	Spring
524	801072	Lock spring for 15 mm tube
525		Lower back rest tube Medic back mechanism
526		Terminal plug 20x30 mm
527	801370	Plastic knob
528	800475	Washer BRB 10,5x22x2
529	801350	Tap head nut
530		Screw angle lock Medic back mechanism
531		Plastic washer
532		Medic back attachment tube 155mm
532		Medic back attachment tube 112mm
4)	800837	Seat plate attachment Medic
533	800128	Washer BRB 6,4x12x1,5 Black
534	800374	Screw MC6S M6x16
535		Plastic knob M8x27
536		Seat plate attachment

Items listed without a complete articlenumber on this page are not sold separatley. They belong to the complete unit, who are shown in bold.

Low back, Medic back mechanics



High back, Medic back mechanics



Medic back mechanics

